

Compatibility with other modules must be confirmed with support@om-light.com

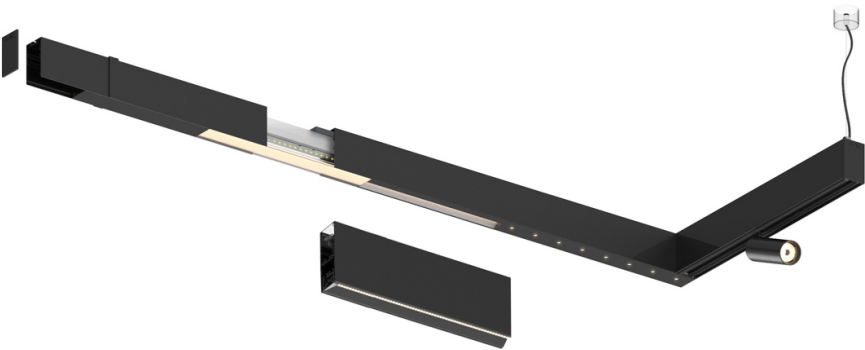
Design: OM + Bartenbach GmbH

Module with linear extruded lenses (Lightstream) combined with a secondary reflector, integrated into an extruded aluminium profile.

LED CRI>90 / >50.000h, L80/B10 / 2-step MacAdam

Power supply included.

IP20 | 230Vac | 50/60Hz



	3000K	Light Source	Luminaire
Power	27W		32W
Flux	3360lm		2720lm
Efficiency	127lm/W		87lm/W
LOR	-		0.8100000000000001
UGR	-		<19

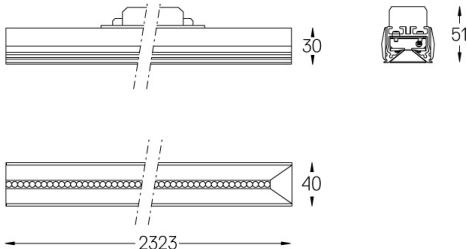


Beam angle

Wide flood 80°

Application

Weight



Finishes

○ .01 White / RAL 9010

● .02 Black / RAL 9005

For the specific supply of "DALI 2" drivers, please contact: support@om-light.com

Choose the length and layout of the system exactly as you want it, to model the right lighting functions for different tasks. For further information please contact: support@om-light.com