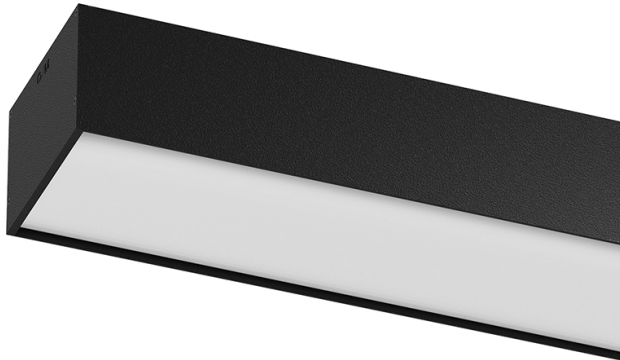


U120

IP54 Surface

87W / 6525lm / 3000K / DALI / Diffuse /
1459mm

62099



Design: Eduardo Souto de Moura

Surface luminaire with housing made of aluminium profile with 25micron maximum corrosion resistance anodization with matt finish or with textured electrostatic 100% polyester paint.

Frosted polycarbonate diffuser with user friendly clipping system and double fitting system: flushed or recessed.

Aluminium anodised end caps with matt finish or electrostatic 100% polyester paint with textured-finish.

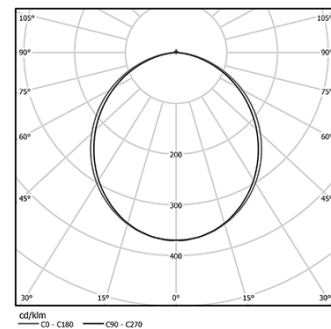
LED CRI>80 / >50.000h, L80/B10 / 3-step MacAdam

Power supply included.

IP54 | 230Vac | 50/60Hz



LED	3000K	Light Source	Luminaire
Power		87W	92,9W
Flux		10575lm	6525lm
Efficiency		134lm/W	70lm/W
LOR		-	62%
UGR		-	<25



Beam angle
Diffuse

Application



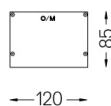
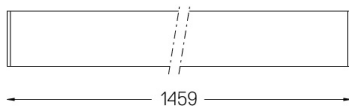
Weight
6,5Kg



Finishes

- .01 White / RAL 9010
- .02 Black / RAL 9005
- .10 Anodised aluminium

For the specific supply of "DALI 2" drivers, please contact:
support@om-light.com



Data according to regulations

2019/2020/EU supplemented by 2021/341 | 2019/2015/EU supplemented by 2021/340/EU Energy Consumption Labelling Ordinance. This product contains light sources of efficiency class D
Model Identifier WU-M-526-S-BC-830, WU-M-536-S-BC-830