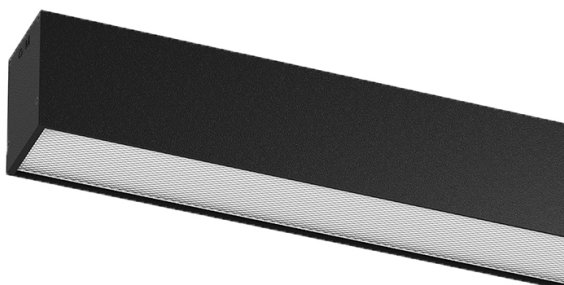


U60

Surface/Pendant

28W / 3200lm / 4000K / On/Off / Prismatic /
2271mm

61884



Design: Eduardo Souto de Moura

Surface or pendant luminaire with housing made of aluminium profile with 25micron maximum corrosion resistance anodization with matt finish or with textured electrostatic 100% polyester paint. Prismatic polycarbonate diffuser with low luminance and glare control (UGR<19 for low output or UGR<22 for High Output).

Aluminium anodised end caps with matt finish or electrostatic 100% polyester paint with textured-finish.

Fitting accessories ordered separately.

LED CRI>80 / >50.000h, L80/B10 / 3-step MacAdam
Power supply included.
IP40 | 230Vac | 50/60Hz



| LED | 4000K | Light Source | Luminaire |
|------------|-------|--------------|-----------|
| Power | | 28W | 32,9W |
| Flux | | 5200lm | 3200lm |
| Efficiency | | 186lm/W | 97lm/W |
| LOR | | - | 62% |
| UGR | | - | <19 |



Beam angle
Prismatic

Application



Weight
5Kg



Finishes

- .01 White / RAL 9010
- .02 Black / RAL 9005
- .10 Anodised aluminium

Mandatory

54036 Pendant direct fitting accessory

54034 Clear Base

ø60x35mm

Data according to regulations

2019/2020/EU supplemented by 2021/341 | 2019/2015/EU supplemented by 2021/340/EU Energy Consumption Labelling Ordinance. This product contains light sources of efficiency class C
Model Identifier 89603217