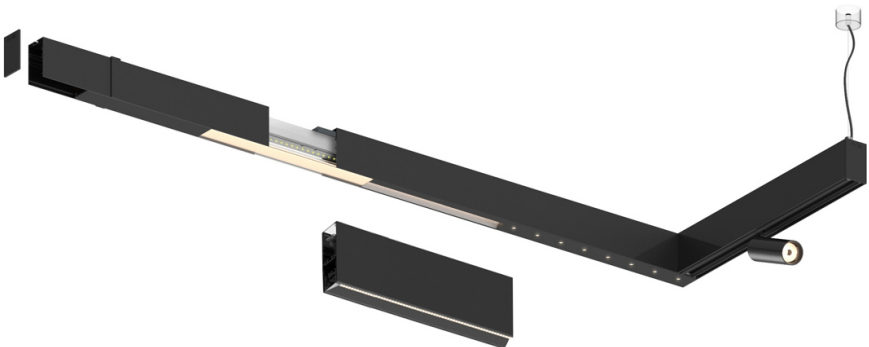
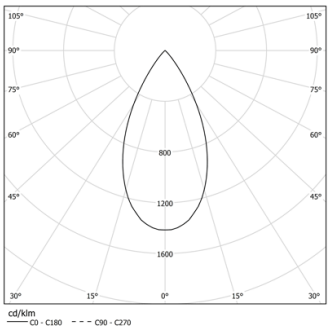


Design: O/M + Bartenbach GmbH  
inVision module to Sys45 system with housing and  
perforated cover plate made of aluminium with  
textured-paint finish.

LED CRI>90 / >50.000h, L80/B10 / 2-step MacAdam  
Power supply included.  
IP20 | 230Vac | 50/60Hz



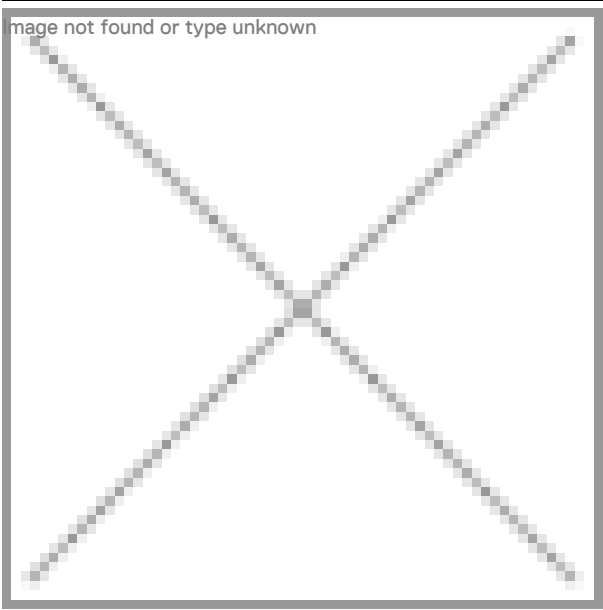
LED	2700K	Light Source	Luminaire
Power		27W	32W
Flux		2400lm	1840lm
Efficiency		89lm/W	58lm/W
LOR		-	77%
UGR		-	<10



Beam angle  
Flood 50°

Application

Weight



- Finishes
- .01 White / RAL 9010
  - .02 Black / RAL 9005

Choose the length and layout of the system exactly as you want it, to  
model the right lighting functions for different tasks. For further  
information please contact: [support@om-light.com](mailto:support@om-light.com)  
For the specific supply of "DALI 2" drivers, please contact:  
[support@om-light.com](mailto:support@om-light.com)