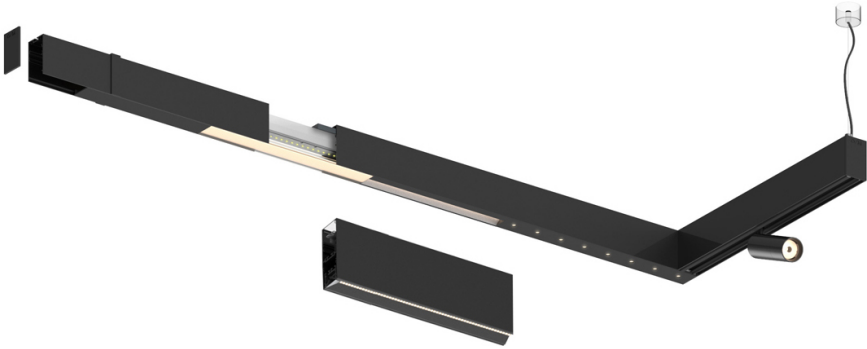
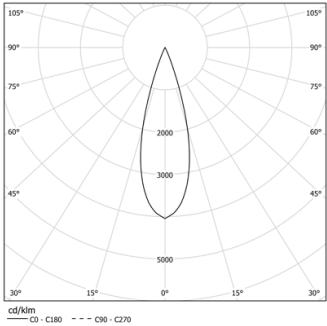


Design: O/M + Bartenbach GmbH
inVision module to Sys45 system with housing and
perforated cover plate made of aluminium with
textured-paint finish.

LED CRI>90 / >50.000h, L80/B10 / 2-step MacAdam
Power supply included.
IP20 | 230Vac | 50/60Hz



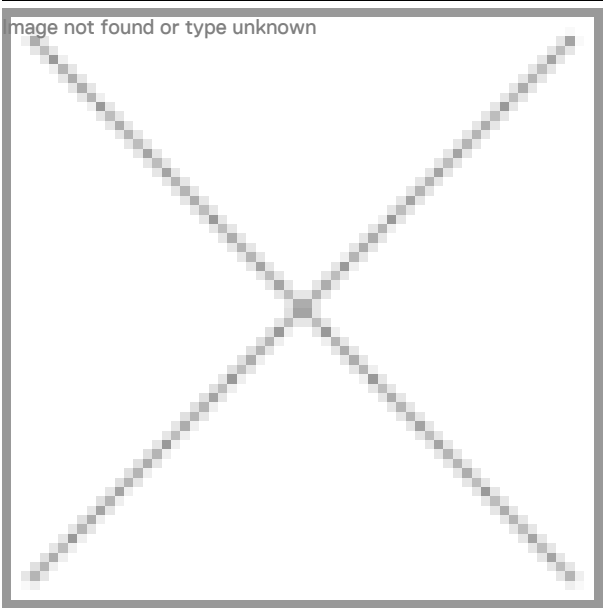
LED	2700K	Light Source	Luminaire
Power		52W	64W
Flux		4800lm	3480lm
Efficiency		92lm/W	54lm/W
LOR		-	73%
UGR		-	<13



Beam angle
Medium 30°

Application

Weight



- Finishes
- .01 White / RAL 9010
 - .02 Black / RAL 9005

Choose the length and layout of the system exactly as you want it, to
model the right lighting functions for different tasks. For further
information please contact: support@om-light.com
For the specific supply of "DALI 2" drivers, please contact:
support@om-light.com