

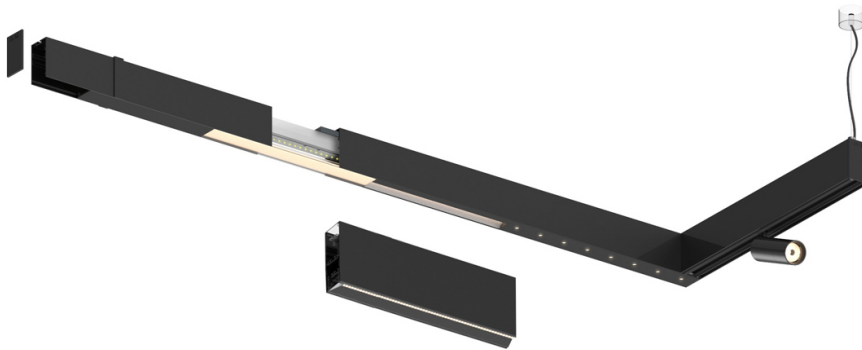
Sys45 inVision module


27W / 1760lm / 2700K / DALI / Medium 30° /
1200mm

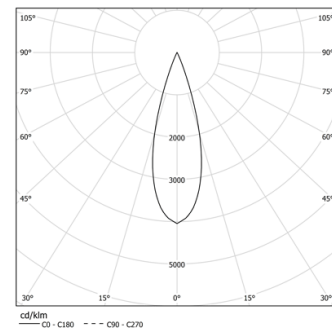
61269

Design: O/M + Bartenbach GmbH
inVision module to Sys45 system with housing and
perforated cover plate made of aluminium with
textured-paint finish.

LED CRI>90 / >50.000h, L80/B10 / 2-step MacAdam
Power supply included.
IP20 | 230Vac | 50/60Hz



 LED	2700K	Light Source	Luminaire
Power		27W	32W
Flux		2400lm	1760lm
Efficiency		89lm/W	55lm/W
LOR		-	73%
UGR		-	<10

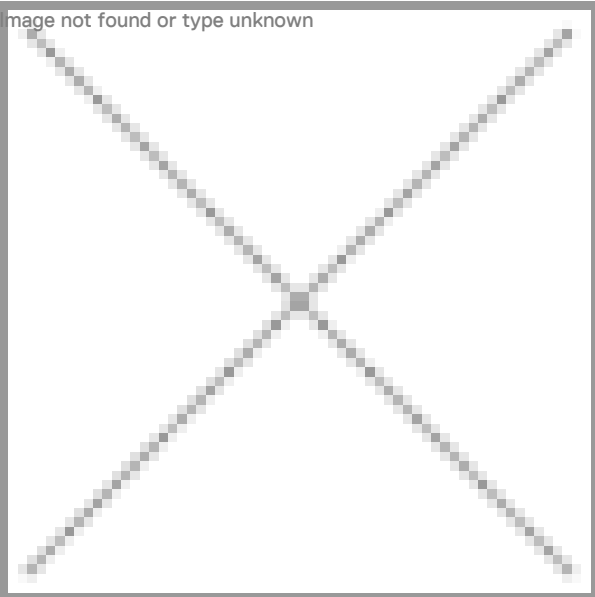


Beam angle
Medium 30°

Application

Weight

Image not found or type unknown



Finishes

- ☐ .01 White / RAL 9010
☒ .02 Black / RAL 9005

Choose the length and layout of the system exactly as you want it, to model the right lighting functions for different tasks. For further information please contact: support@om-light.com
For the specific supply of "DALI 2" drivers, please contact: support@om-light.com