

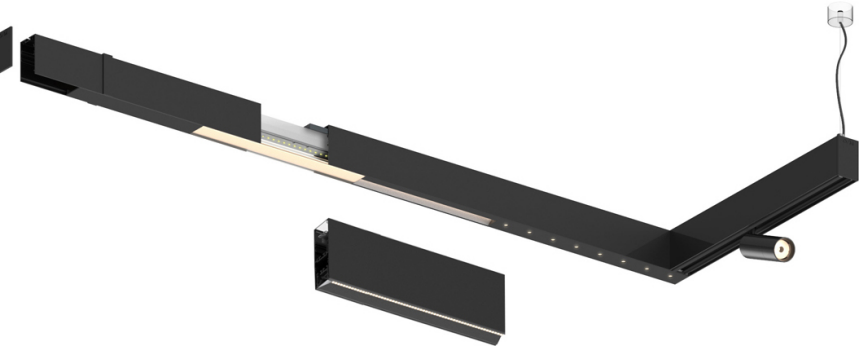
16W* / 710lm* / 2200K-5000K / DALI /
Asymmetric / 600mm

61255

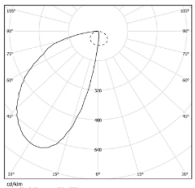
Compatibility with other modules must be confirmed
with support@om-light.com

Design: O/M + Bartenbach GmbH
LED light source with excellent colour consistency
and long operation lifespan. LED light source in
Tunable White.
Asymmetrical aluminium reflector.

LED CRI>80 / >50.000h, L80/B10
2-step MacAdam / power supply included.
DALI DT8
IP20 | 230Vac | 50/60Hz



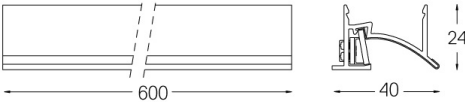
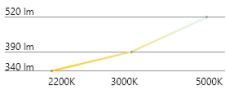
LED	2200K-5000K	Light Source	Luminaire
Power		16W*	19W*
Flux		1550lm*	710lm*
Efficiency		97lm/W	37lm/W
LOR		-	46%
UGR		-	-



Beam angle
Asymmetric

Application

Weight



Finishes

- .01 White / RAL 9010
- .02 Black / RAL 9005
- .03 Grey / RAL 9006

Choose the length and layout of the system exactly as you want it, to
model the right lighting functions for different tasks. For further
information please contact: support@om-light.com
DALI DT8 driver