

27W / 2750lm / 3000K / DALI / Wide flood
80° / 1440mm

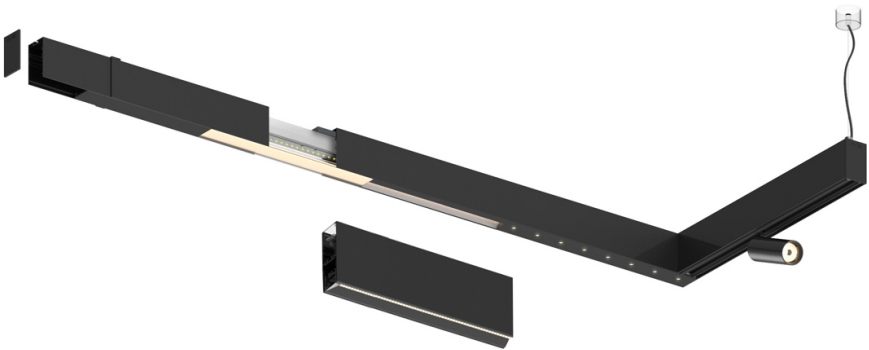
61210

Compatibility with other modules must be confirmed
with support@om-light.com

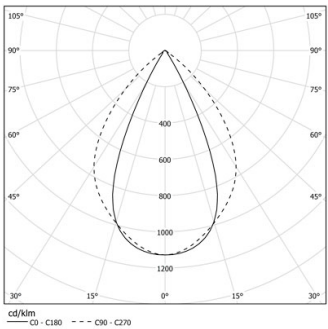
Design: OM + Bartenbach
GmbH

Module with linear extruded lenses (Lightstream)
combined with a secondary reflector, integrated into
an extruded aluminium profile.

LED CRI>90 / >50.000h, L80/B10 / 2-step MacAdam
Power supply included.
IP20 | 230Vac | 50/60Hz



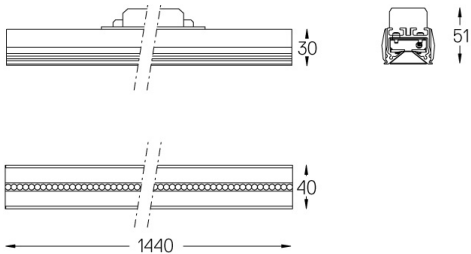
| LED | 3000K | Light Source | Luminaire |
|------------|-------|--------------|-----------|
| Power | | 27W | 31W |
| Flux | | 3450lm | 2750lm |
| Efficiency | | 130lm/W | 89lm/W |
| LOR | | - | 0.8 |
| UGR | | - | <19 |



Beam angle
Wide flood 80°

Application

Weight



Finishes

- .01 White / RAL 9010
- .02 Black / RAL 9005

For the specific supply of "DALI 2" drivers, please contact:
support@om-light.com

Choose the length and layout of the system exactly as you want it, to
model the right lighting functions for different tasks. For further
information please contact: support@om-light.com