

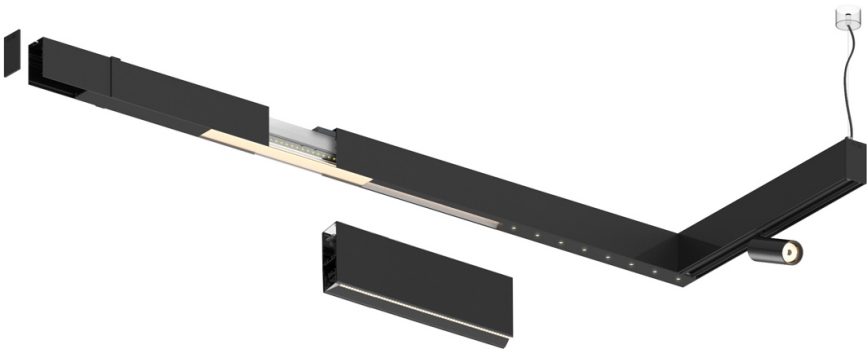



Compatibility with other modules must be confirmed with [support@om-light.com](mailto:support@om-light.com)

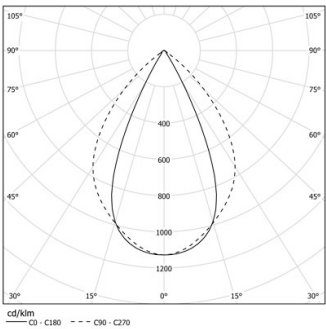
Design: OM + Bartenbach GmbH  
Module with linear extruded lenses (Lightstream) combined with a secondary reflector, integrated into an extruded aluminium profile.

LED CRI>90 / >50.000h, L80/B10 / 2-step MacAdam  
Power supply included.  
IP20 | 230Vac | 50/60Hz



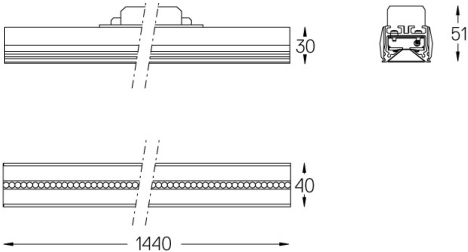
 3000K	Light Source	Luminaire
Power	17W	20W
Flux	2100lm	1700lm
Efficiency	127lm/W	87lm/W
LOR	-	0.8100000000000001
UGR	-	<19



Beam angle  
Wide flood 80°

Application

Weight



Finishes

- .01 White / RAL 9010
- .02 Black / RAL 9005

For the specific supply of "DALI 2" drivers, please contact: [support@om-light.com](mailto:support@om-light.com)

Choose the length and layout of the system exactly as you want it, to model the right lighting functions for different tasks. For further information please contact: [support@om-light.com](mailto:support@om-light.com)