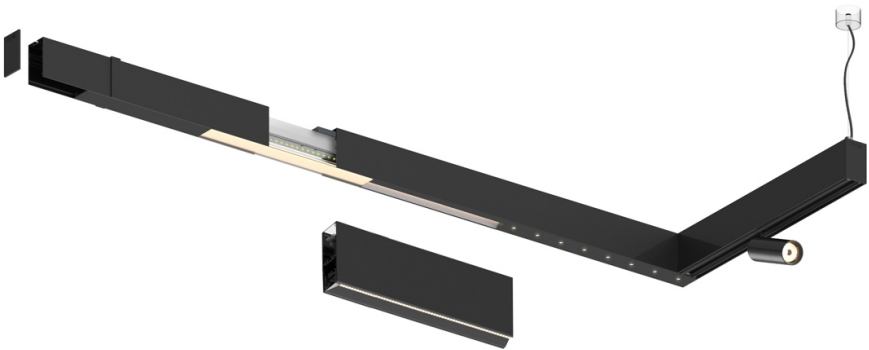


23W* / 2320lm* / 2200K-5000K / DALI /
Wide flood 80° / 1171mm

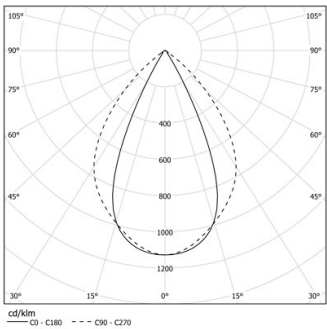
Compatibility with other modules must be confirmed
with support@om-light.com

Design: OM + Bartenbach
GmbH
Module with linear extruded lenses (Lightstream)
combined with a secondary reflector, integrated into
an extruded aluminium profile.

LED CRI>80 / >50.000h, L80/B10 / 2-step MacAdam
Power supply included.
IP20 | 230Vac | 50/60Hz



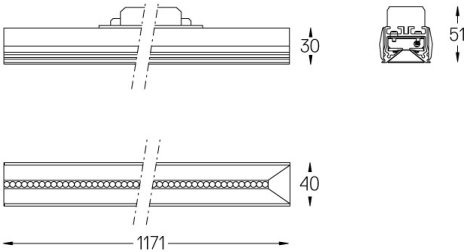
	2200K-5000K	Light Source	Luminaire
Power	23W*		27W*
Flux	2920lm*		2320lm*
Efficiency	120lm/W		85lm/W
LOR	-		0.8273381294964028
UGR	-		<19



Beam angle
Wide flood 80°

Application

Weight



Finishes

- .01 White / RAL 9010
- .02 Black / RAL 9005

For the specific supply of "DALI 2" drivers, please contact:
support@om-light.com

Choose the length and layout of the system exactly as you want it, to
model the right lighting functions for different tasks. For further
information please contact: support@om-light.com