

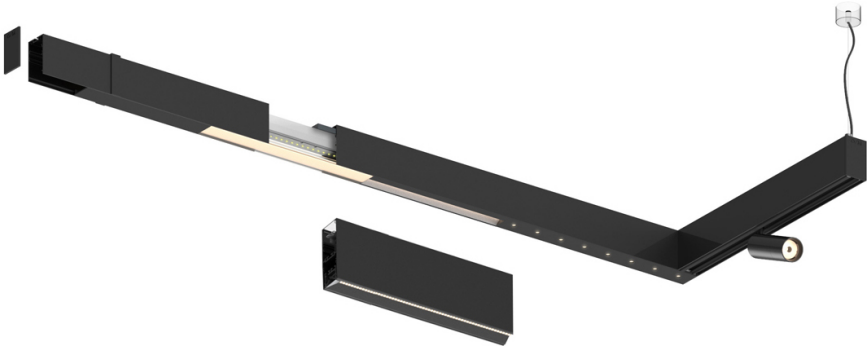



Compatibility with other modules must be confirmed  
with [support@om-light.com](mailto:support@om-light.com)

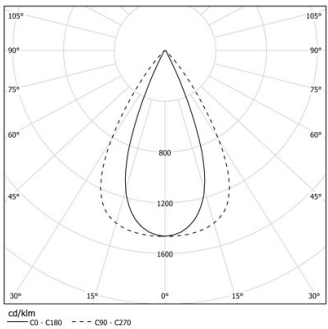
Design: OM + Bartenbach  
GmbH  
Module with linear extruded lenses (Lightstream)  
combined with a secondary reflector, integrated into  
an extruded aluminium profile.

LED CRI>80 / >50.000h, L80/B10 / 2-step MacAdam  
Power supply included.  
IP20 | 230Vac | 50/60Hz



	2200K-5000K	Light Source	Luminaire
Power	23W*		27W*
Flux	2920lm*		2320lm*
Efficiency	120lm/W		85lm/W
LOR	-		0.8273381294964028
UGR	-		<13

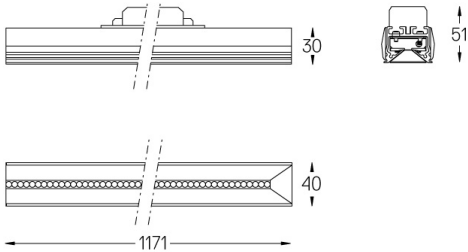


Beam angle  
Flood 65°

Application

Weight

mm



Finishes

- .01 White / RAL 9010
- .02 Black / RAL 9005

For the specific supply of "DALI 2" drivers, please contact:  
[support@om-light.com](mailto:support@om-light.com)

Choose the length and layout of the system exactly as you want it, to  
model the right lighting functions for different tasks. For further  
information please contact: [support@om-light.com](mailto:support@om-light.com)