

Compatibility with other modules must be confirmed with [support@om-light.com](mailto:support@om-light.com)

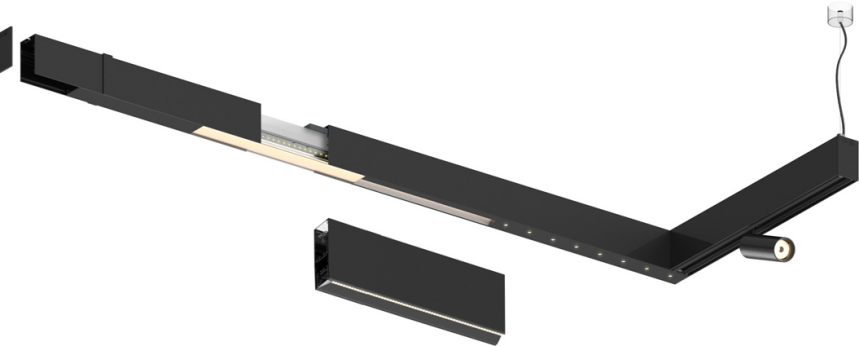
Design: OM + Bartenbach GmbH


Module with linear extruded lenses (Lightstream) combined with a secondary reflector, integrated into an extruded aluminium profile.

LED CRI>90 / >50.000h, L80/B10 / 2-step MacAdam

Power supply included.

IP20 | 230Vac | 50/60Hz



 4000K	Light Source	Luminaire
Power	17W	20W
Flux	2250lm	1800lm
Efficiency	136lm/W	92lm/W
LOR	-	0.8
UGR	-	<19



Beam angle

Wide flood 80°

Application

Weight



Finishes

○ .01 White / RAL 9010

● .02 Black / RAL 9005

For the specific supply of "DALI 2" drivers, please contact: [support@om-light.com](mailto:support@om-light.com)

Choose the length and layout of the system exactly as you want it, to model the right lighting functions for different tasks. For further information please contact: [support@om-light.com](mailto:support@om-light.com)