

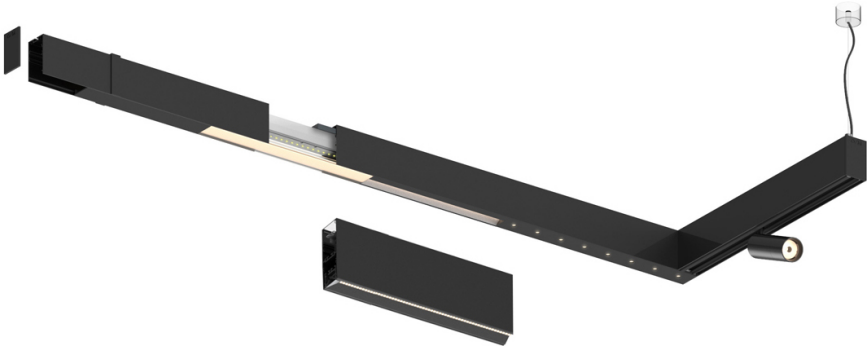



Compatibility with other modules must be confirmed with support@om-light.com

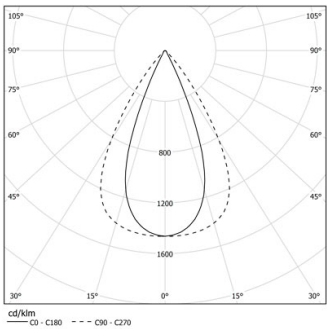
Design: OM + Bartenbach GmbH
Module with linear extruded lenses (Lightstream) combined with a secondary reflector, integrated into an extruded aluminium profile.

LED CRI>90 / >50.000h, L80/B10 / 2-step MacAdam
Power supply included.
IP20 | 230Vac | 50/60Hz



| | | |
|---|--------------|-----------|
|  4000K | Light Source | Luminaire |
| Power | 17W | 20W |
| Flux | 2250lm | 1800lm |
| Efficiency | 136lm/W | 92lm/W |
| LOR | - | 0.8 |
| UGR | - | <13 |



Beam angle
Flood 65°

Application

Weight



Finishes

 .01 White / RAL 9010

 .02 Black / RAL 9005

For the specific supply of "DALI 2" drivers, please contact: support@om-light.com

Choose the length and layout of the system exactly as you want it, to model the right lighting functions for different tasks. For further information please contact: support@om-light.com

