

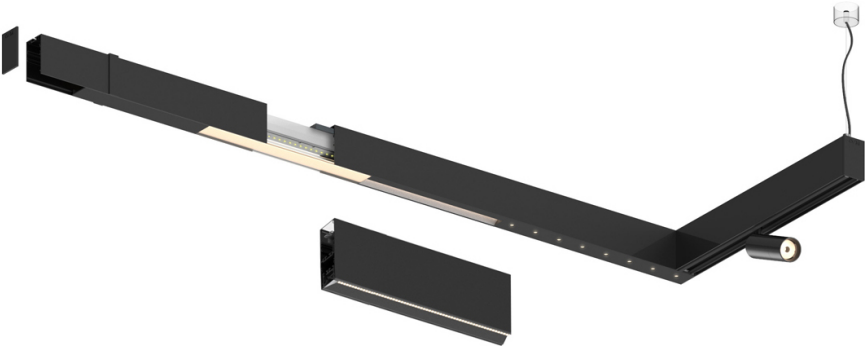
27W / 2750lm / 3000K / DALI / Wide flood
80° / 1459mm


61162

Compatibility with other modules must be confirmed
with support@om-light.com

Design: OM + Bartenbach
GmbH
Module with linear extruded lenses (Lightstream)
combined with a secondary reflector, integrated into
an extruded aluminium profile.

LED CRI>90 / >50.000h, L80/B10 / 2-step MacAdam
Power supply included.
IP20 | 230Vac | 50/60Hz



 3000K	Light Source	Luminaire
Power	27W	31W
Flux	3450lm	2750lm
Efficiency	130lm/W	89lm/W
LOR	-	0.8
UGR	-	<19



Beam angle
Wide flood 80°

Application

Weight



Finishes

○ .01 White / RAL 9010

● .02 Black / RAL 9005

For the specific supply of "DALI 2" drivers, please contact:
support@om-light.com

Choose the length and layout of the system exactly as you want it, to
model the right lighting functions for different tasks. For further
information please contact: support@om-light.com