

Compatibility with other modules must be confirmed with support@om-light.com

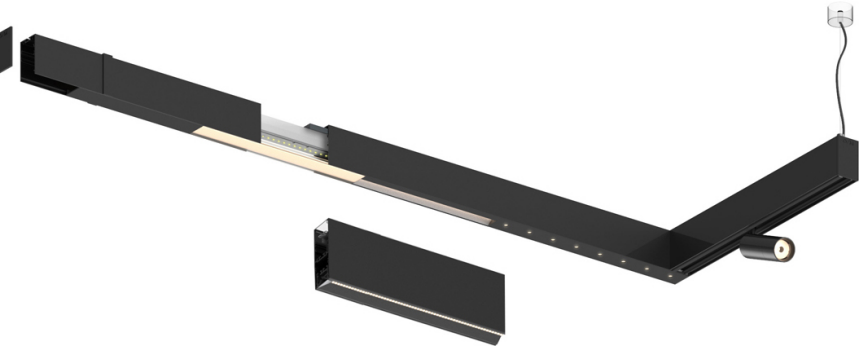
Design: OM + Bartenbach GmbH


Module with linear extruded lenses (Lightstream) combined with a secondary reflector, integrated into an extruded aluminium profile.

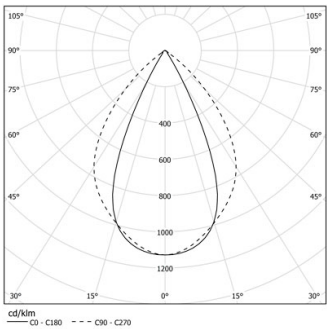
LED CRI>90 / >50.000h, L80/B10 / 2-step MacAdam

Power supply included.

IP20 | 230Vac | 50/60Hz



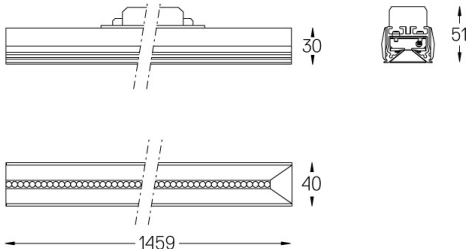
 3000K	Light Source	Luminaire
Power	27W	31W
Flux	3450lm	2750lm
Efficiency	130lm/W	89lm/W
LOR	-	0.8
UGR	-	<19



Beam angle
Wide flood 80°

Application

Weight



- Finishes
- .01 White / RAL 9010
 - .02 Black / RAL 9005

For the specific supply of "DALI 2" drivers, please contact: support@om-light.com

Choose the length and layout of the system exactly as you want it, to model the right lighting functions for different tasks. For further information please contact: support@om-light.com