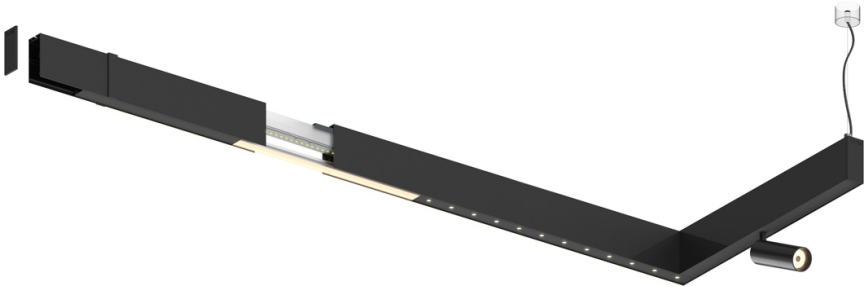

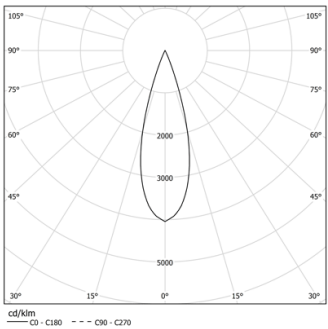


Design: O/M + Bartenbach GmbH  
inVision module with housing and perforated cover  
plate made of aluminium with textured-paint finish.

LED >80CRI<90 / >50.000h, L80/B10 / 3-step MacAdam  
Power supply included.  
DALI DT8.  
IP20 | 230Vac | 50/60Hz



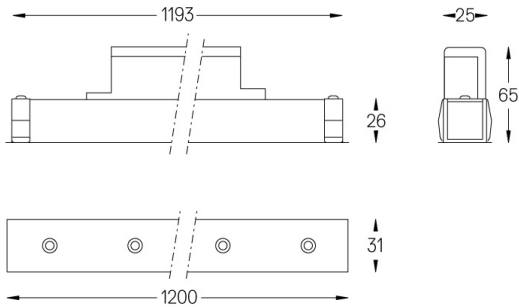
 2200K-5000K	Light Source	Luminaire
Power	46W	58W
Flux	3760lm	2720lm
Efficiency	82lm/W	47lm/W
LOR	-	0.72
UGR	-	<10



Beam angle  
Medium 30°

Application

Weight



### Finishes

- .01 White / RAL 9010
- .02 Black / RAL 9005

### DALI DT8

Choose the length and layout of the system exactly as you want it, to  
model the right lighting functions for different tasks. For further  
information please contact: [support@om-light.com](mailto:support@om-light.com)