

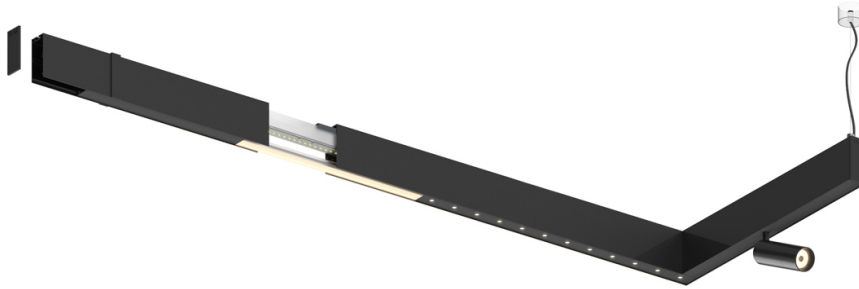
Sys35 inVision module

46W / 2720lm / 2200K-5000K / DALI /
Medium 30° / 1200mm

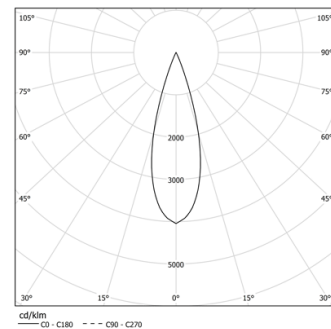
60984

Design: O/M + Bartenbach GmbH
inVision module with housing and perforated cover
plate made of aluminium with textured-paint finish.

LED >80CRI<90 / >50.000h, L80/B10 / 3-step MacAdam
Power supply included.
DALI DT8.
IP20 | 230Vac | 50/60Hz



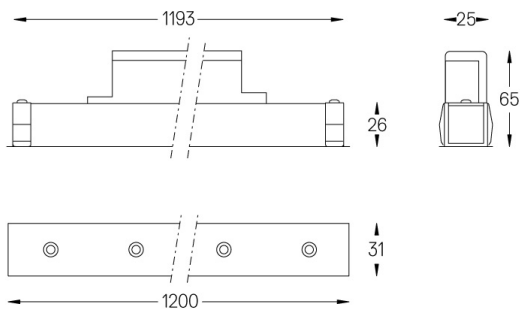
LED	2200K-5000K	Light Source	Luminaire
Power		46W	58W
Flux		3760lm	2720lm
Efficiency		82lm/W	47lm/W
LOR		-	0.72
UGR		-	<10



Beam angle
Medium 30°

Application

Weight



Finishes

- .01 White / RAL 9010
● .02 Black / RAL 9005

DALI DT8

Choose the length and layout of the system exactly as you want it, to model the right lighting functions for different tasks. For further information please contact: support@om-light.com