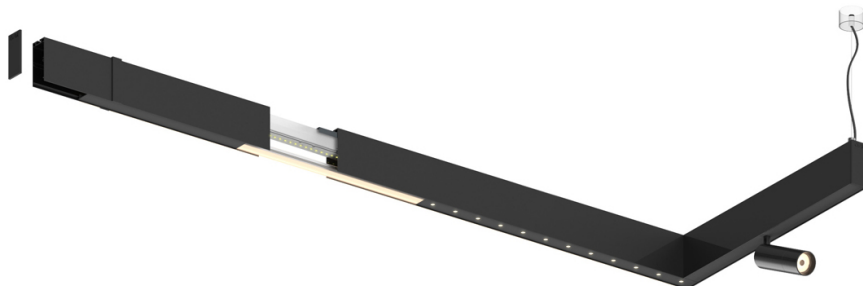


26W / 1960lm / 3000K / DALI / Flood 50° /
600mm

60961

Design: O/M + Bartenbach GmbH
inVision module with housing and perforated cover
plate made of aluminium with textured-paint finish.

LED CRI>90 / >50.000h, L80/B10 / 2-step MacAdam
Power supply included.
IP20 | 230Vac | 50/60Hz



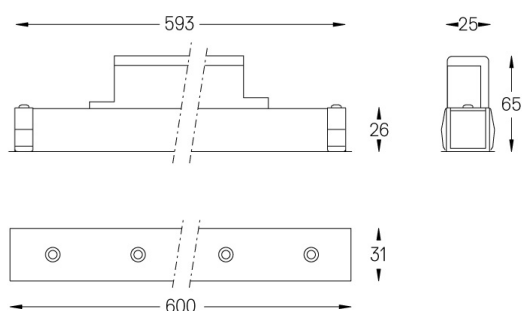
| LED | 3000K | Light Source | Luminaire |
|------------|-------|--------------|--------------------|
| Power | | 26W | 32W |
| Flux | | 2580lm | 1960lm |
| Efficiency | | 99lm/W | 61lm/W |
| LOR | | - | 0.7596899224806202 |
| UGR | | - | <16 |



Beam angle
Flood 50°

Application

Weight
0,5Kg



Finishes

- .01 White / RAL 9010
- .02 Black / RAL 9005

For the specific supply of "DALI 2" drivers, please contact:
support@om-light.com

Choose the length and layout of the system exactly as you want it, to
model the right lighting functions for different tasks. For further
information please contact: support@om-light.com