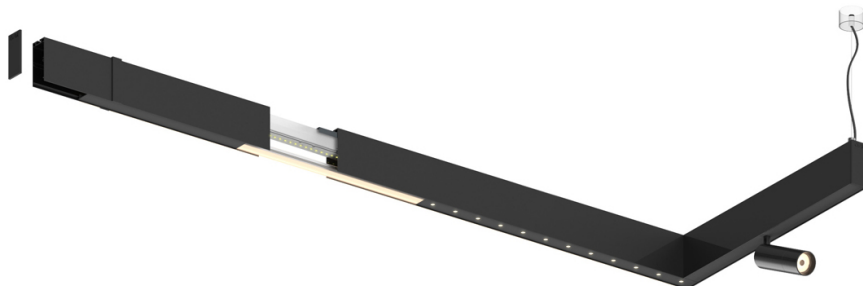


26W / 1880lm / 3000K / DALI / Medium 30° /  
600mm

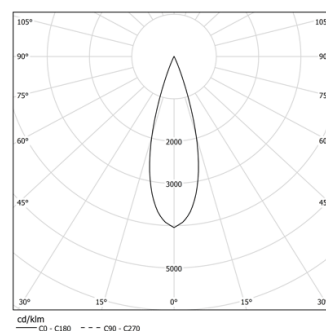
60959

Design: O/M + Bartenbach GmbH  
inVision module with housing and perforated cover  
plate made of aluminium with textured-paint finish.

LED CRI>90 / >50.000h, L80/B10 / 2-step MacAdam  
Power supply included.  
IP20 | 230Vac | 50/60Hz



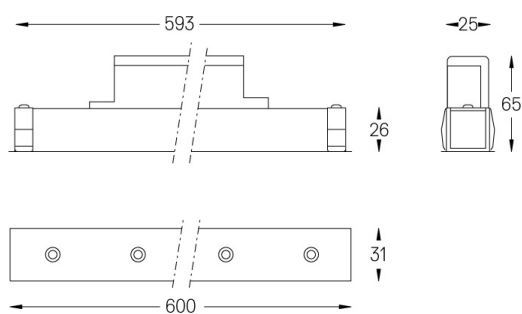
LED	3000K	Light Source	Luminaire
Power	26W		32W
Flux	2580lm		1880lm
Efficiency	99lm/W		59lm/W
LOR	-		0.7286821705426356
UGR	-		<13



Beam angle  
Medium 30°

Application

Weight  
0,5Kg



### Finishes

- .01 White / RAL 9010
- .02 Black / RAL 9005

For the specific supply of "DALI 2" drivers, please contact:  
support@om-light.com

Choose the length and layout of the system exactly as you want it, to  
model the right lighting functions for different tasks. For further  
information please contact: support@om-light.com