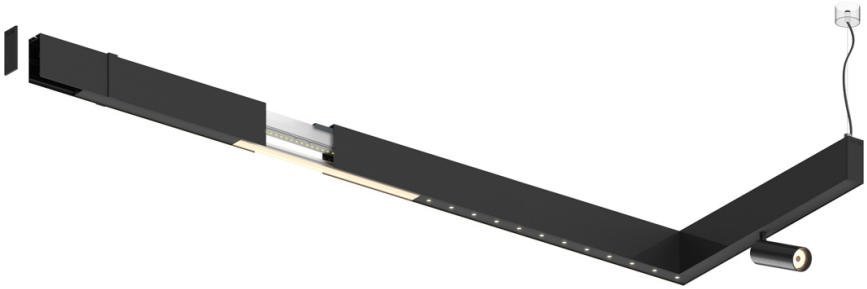
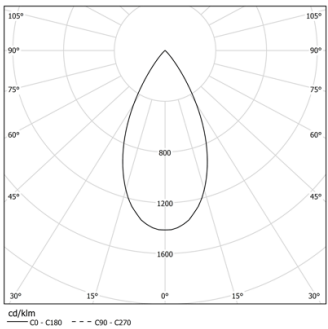


Design: O/M + Bartenbach GmbH  
inVision module with housing and perforated cover  
plate made of aluminium with textured-paint finish.

LED CRI>90 / >50.000h, L80/B10 / 2-step MacAdam  
Power supply included.  
IP20 | 230Vac | 50/60Hz



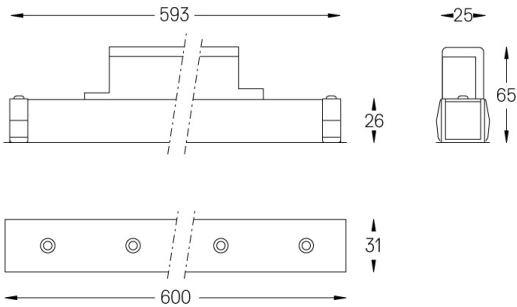
LED	2700K	Light Source	Luminaire
Power	14W		16W
Flux	1200lm		920lm
Efficiency	86lm/W		58lm/W
LOR	-		0.766666666666667
UGR	-		<10



Beam angle  
Flood 50°

Application

Weight  
0,5Kg



### Finishes

- .01 White / RAL 9010
- .02 Black / RAL 9005

For the specific supply of "DALI 2" drivers, please contact:  
support@om-light.com

Choose the length and layout of the system exactly as you want it, to  
model the right lighting functions for different tasks. For further  
information please contact: support@om-light.com