

10W / 990lm / 4000K / DALI / Medium 28° /  
ø45mm

60303



Design: O/M

Recessed adjustable spotlight with aluminium body.

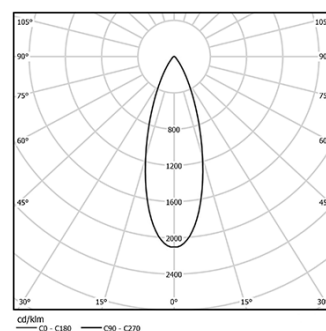
The spotlight can be rotated up to 90° horizontally and 330° vertically.

Easy recessing system with spring clips.

Accessories available separately and easily applicable after installation.

LED CRI>80 / >50.000h, L80/B10  
2-step MacAdam / Power supply included.  
IP20 | 230Vac | 50/60Hz

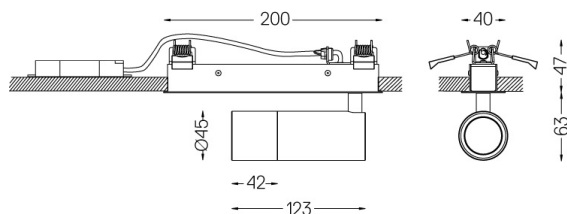
LED	4000K	Light Source	Luminaire
Power		10W	12,5W
Flux		1360lm	990lm
Efficiency		136lm/W	79lm/W
LOR		-	73%
UGR		-	<16

Beam angle  
Medium 28°

Application

Weight  
0,6Kg

194x26



Finishes

- .01 White / RAL 9010
- .02 Black / RAL 9005

Optional

59016 Elliptical refractor

Ø39x0,5mm

59017 Soft diffuser

Ø39x0,5mm

59018 Louvre

Ø39x3mm

59019 Snoot 72mm

Ø45x72

For the specific supply of "DALI 2" drivers, please contact:  
support@om-light.com

The cutout dimensions are for plasterboard ceilings. For other type of material please contact: support@om-light.com

Data according to regulations

2019/2020/EU supplemented by 2021/341 | 2019/2015/EU  
supplemented by 2021/340/EU Energy Consumption Labelling  
Ordinance. This product contains a light source of efficiency class F  
Model Identifier 2053560247H