

10W / 1110lm / 4000K / On/Off / Spot 12° /
ø45mm

60300



Design: O/M

Recessed adjustable spotlight with aluminium body.
The spotlight can be rotated up to 90° horizontally
and 330° vertically.

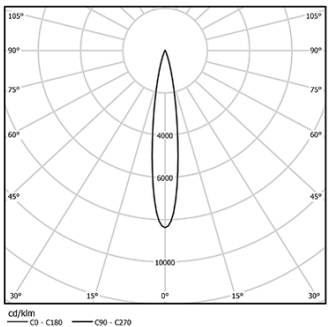
Easy recessing system with spring clips.

Accessories available separately and easily applicable
after installation.

LED CRI>80 / >50.000h, L80/B10
2-step MacAdam / Power supply included.
IP20 | 230Vac | 50/60Hz



LED	4000K	Light Source	Luminaire
Power		10W	12,5W
Flux		1360lm	1110lm
Efficiency		136lm/W	89lm/W
LOR		-	82%
UGR		-	<13



Beam angle
Spot 12°

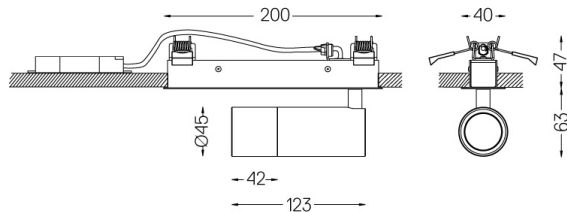
Application



Weight
0,6Kg



194x26



Finishes

- .01 White / RAL 9010
- .02 Black / RAL 9005

Optional

- 59016** Elliptical refractor
Ø39x0,5mm
- 59017** Soft diffuser
Ø39x0,5mm
- 59018** Louvre
Ø39x3mm
- 59019** Snoot 72mm
Ø45x72

The cutout dimensions are for plasterboard ceilings. For other type of
material please contact: support@om-light.com

Data according to regulations

2019/2020/EU supplemented by 2021/341 |2019/2015/EU
supplemented by 2021/340/EU Energy Consumption Labelling
Ordinance. This product contains a light source of efficiency class F
Model Identifier 2053560247H