

10W / 810lm / 3000K / DALI / Medium 28° /
ø45mm

60299



Design: O/M

Recessed adjustable spotlight with aluminium body.
The spotlight can be rotated up to 90° horizontally
and 330° vertically.

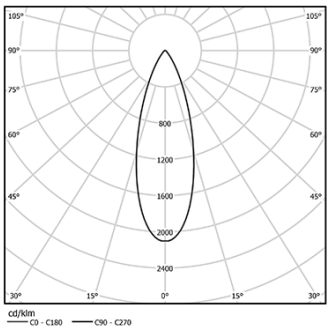
Easy recessing system with spring clips.

Accessories available separately and easily applicable
after installation.

LED CRI>90 / >50.000h, L80/B10
2-step MacAdam / Power supply included.
IP20 | 230Vac | 50/60Hz



LED	3000K	Light Source	Luminaire
Power	10W		12,5W
Flux	1035lm		810lm
Efficiency	104lm/W		65lm/W
LOR	-		78%
UGR	-		<16



Beam angle
Medium 28°

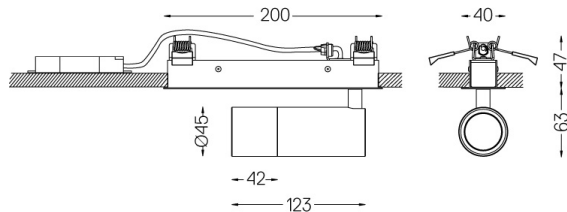
Application



Weight
0,6Kg



194x26



Finishes

- .01 White / RAL 9010
- .02 Black / RAL 9005

Optional

59016 Elliptical refractor

Ø39x0,5mm

59017 Soft diffuser

Ø39x0,5mm

59018 Louvre

Ø39x3mm

59019 Snoot 72mm

Ø45x72

For the specific supply of "DALI 2" drivers, please contact:
support@om-light.com

The cutout dimensions are for plasterboard ceilings. For other type of
material please contact: support@om-light.com

Data according to regulations

2019/2020/EU supplemented by 2021/341 |2019/2015/EU
supplemented by 2021/340/EU Energy Consumption Labelling
Ordinance. This product contains a light source of efficiency class F
Model Identifier 2053560257H