

10W / 910lm / 3000K / On/Off / Spot 12° /
ø45mm

60296



Design: O/M

Recessed adjustable spotlight with aluminium body.

The spotlight can be rotated up to 90° horizontally and 330° vertically.

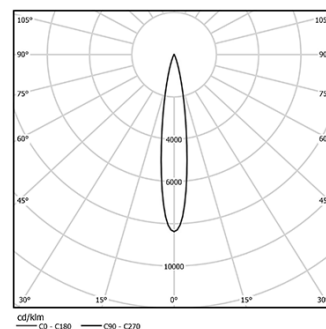
Easy recessing system with spring clips.

Accessories available separately and easily applicable after installation.

LED CRI>90 / >50.000h, L80/B10
2-step MacAdam / Power supply included.
IP20 | 230Vac | 50/60Hz



LED	3000K	Light Source	Luminaire
Power		10W	12,5W
Flux		1035lm	910lm
Efficiency		104lm/W	73lm/W
LOR		-	88%
UGR		-	<13



Beam angle
Spot 12°

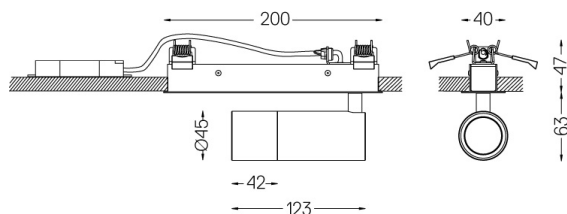
Application



Weight
0,6Kg



194x26



Finishes

- .01 White / RAL 9010
- .02 Black / RAL 9005

Optional

59016 Elliptical refractor

Ø39x0,5mm

59017 Soft diffuser

Ø39x0,5mm

59018 Louvre

Ø39x3mm

59019 Snoot 72mm

Ø45x72

The cutout dimensions are for plasterboard ceilings. For other type of material please contact: support@om-light.com

Data according to regulations

2019/2020/EU supplemented by 2021/341 | 2019/2015/EU
supplemented by 2021/340/EU Energy Consumption Labelling
Ordinance. This product contains a light source of efficiency class F
Model Identifier 2053560257H