

Design: O/M + Bartenbach GmbH

Luminaire with housing of aluminium profile with electrostatic 100% polyester paint with textured-finish.

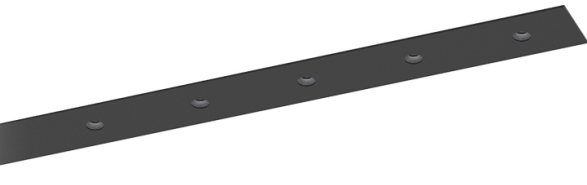
Focal-lens with complex surface and individual complex surface rips to provide a focal point through an aperture for glare free area illumination.

Special springs available on request.

LED CRI>90 / >50.000h, L80/B10 / 2-step MacAdam

Power supply included.

IP20 | 230Vac | 50/60Hz



| LED        | 2700K  | Light Source | Luminaire |
|------------|--------|--------------|-----------|
| Power      | 14W    |              | 17,1W     |
| Flux       | 1200lm |              | 880lm     |
| Efficiency | 86lm/W |              | 52lm/W    |
| LOR        | -      |              | 73%       |
| UGR        | -      |              | <10       |

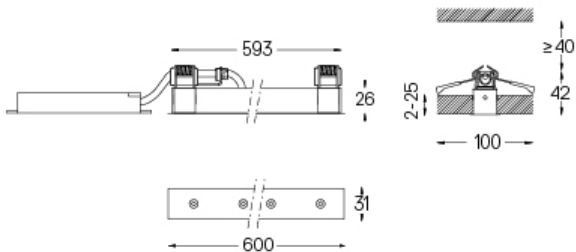


Beam angle  
Medium 31°

Application



Weight  
0,5Kg



### Finishes

- .01 White / RAL 9010
- .02 Black / RAL 9005

For the specific supply of "DALI 2" drivers, please contact:  
support@om-light.com

The cutout dimensions are for plasterboard ceilings. For other type of material please contact: support@om-light.com

Data according to regulations

2019/2020/EU supplemented by 2021/341 | 2019/2015/EU supplemented by 2021/340/EU Energy Consumption Labelling Ordinance. This product contains light sources of efficiency class F

Model Identifier 4053560342L