

Design: O/M + Bartenbach GmbH

Luminaire with housing of aluminium profile with
electrostatic 100% polyester paint with textured-
finish.

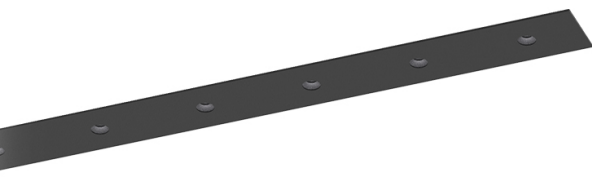
Focal-lens with complex surface and individual
complex surface ribs to provide a focal point through
an aperture for glare free area illumination.

Special springs available on request.

LED CRI>90 / >50.000h, L80/B10 / 2-step MacAdam

Power supply included.

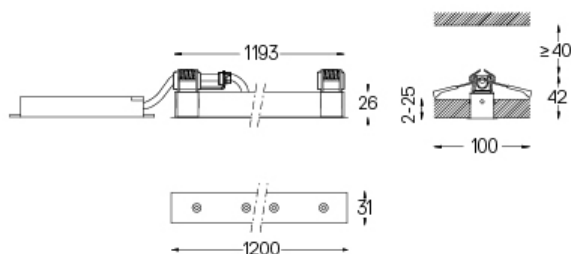
IP20 | 230Vac | 50/60Hz



LED	2700K	Light Source	Luminaire
Power	27W		32,9W
Flux	2400lm		1840lm
Efficiency	89lm/W		56lm/W
LOR	-		77%
UGR	-		<13

Beam angle
Flood 52°

Application

Weight
0,6Kg

Finishes

○ .01 White / RAL 9010

● .02 Black / RAL 9005

The cutout dimensions are for plasterboard ceilings. For other type of
material please contact: support@om-light.com

Data according to regulations

2019/2020/EU supplemented by 2021/341 | 2019/2015/EU
supplemented by 2021/340/EU Energy Consumption Labelling
Ordinance. This product contains light sources of efficiency class F
Model Identifier 4053560342L