

**O/M**

O/M develops luminaires with great visual comfort and precise control. Established as a brand in 2012 in Porto, its origins are traced back across 65 years of lighting fixture manufacturing, creating products that perfectly balance design, electronics, optics, mechanics, and finishing.

Luminous flux, color rendering, color temperature, uniformity and glare are defined using concrete measurements, and with rigorous data analysis and experimentation, form and light effect become a match between design and these precision values.

O/M's team is involved throughout the cycle of design, development and sale. By partnering with some of the greatest specialists in the world, O/M remains at the forefront of technology, while its highly specialized, multidisciplinary teams ensure the efficient management needed to create the best tools for lighting design.

# Spot on

Accent, contrast and definition

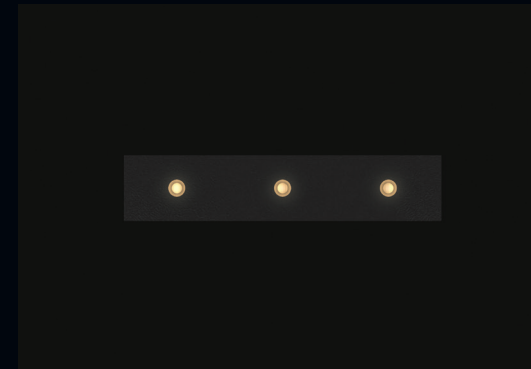


Product Nub | Photo: Inès d'Orey



## Nub

Introducing Nub, a tiny point of light with great comfort. Almost invisible, it produces a quality of light that surpasses similar light fixtures.



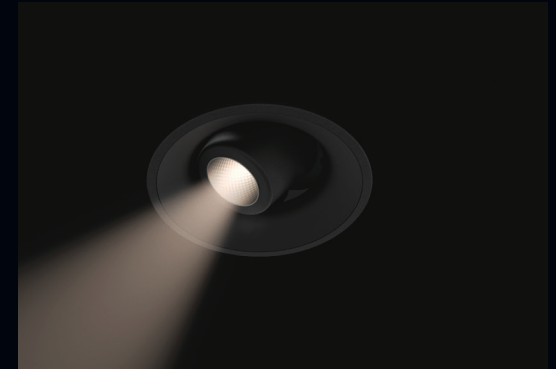
## inVision

The thin blade that complements architecture in the slimmest possible way, yet creates a comfortable environment.



## One

The high-definition luminaire with extremely precise beam angles, for both general and accent lighting.



## One Plus

The adjustable One Plus's optics offer an untouched beam of 90% luminous intensity within the beam angle, regardless of how it is oriented.

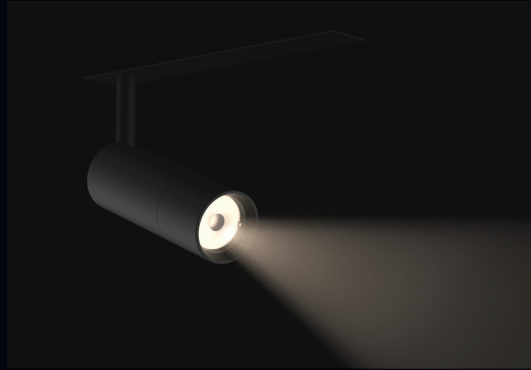


## Over

Featuring the high-definition Lightcore, Over is the spotlight with a deep-set light source offering maximum cut-off angles.

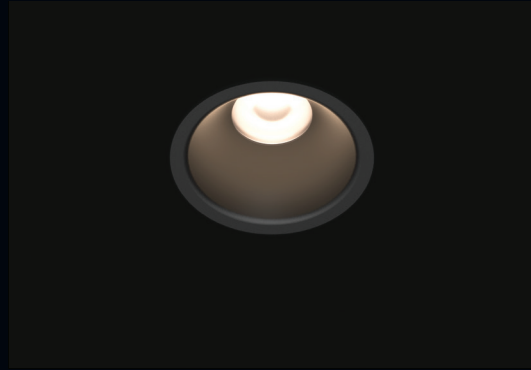
# Spot on

Accent, contrast and definition



## Onit

An adjustable spotlight that expands creative possibilities in lighting design, Onit is the ideal, playful solution for light modelling.



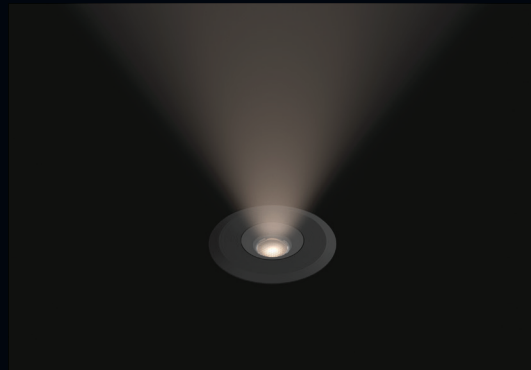
## Go

The versatile reliable downlight with a practical design, Go features indoor and outdoor options, making it the smart solution for any challenge.



## Beam

Clean, modern, and good-looking, Beam is the classic downlight for every need in general and detail lighting.



## Dot

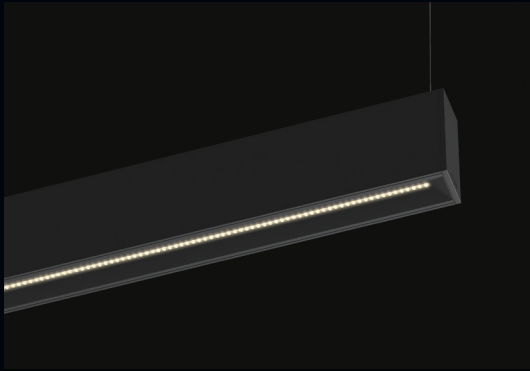
The luminaire that hides a powerful beam in a tiny package: a discreet, durable, economical solution for any wall, ceiling, or floor.



Product Dot | Photo: Inês d'Orey

# Linear

## Linear lighting segments



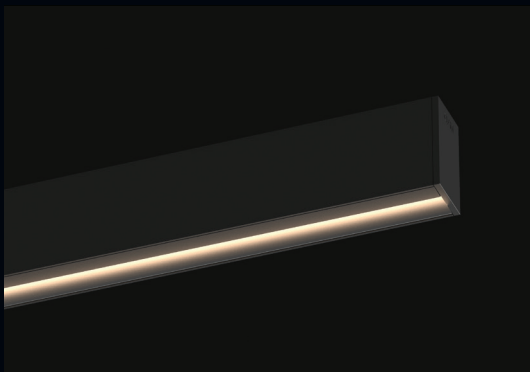
### inFinit

inFinit's glare control and visual comfort make it ideal for workplaces, forming a continuous line of light that subtly integrates with architecture.



### inVision35

inVision in a slimmer profile, to discreetly provide comfortable light in different architectural contexts.



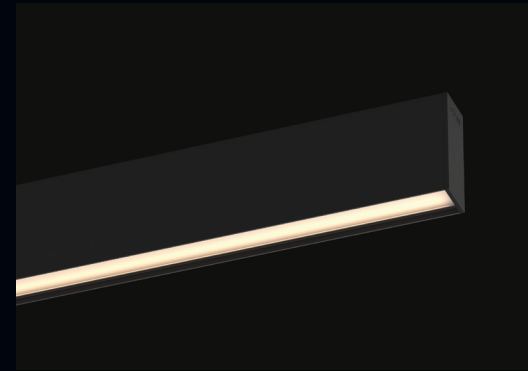
### Uw

This asymmetrical luminaire drapes walls with a controlled, uniform sheet of light, producing a perfect surface wash.



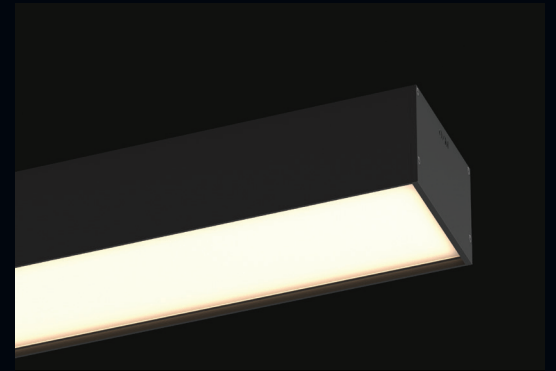
### inVision45

inVision luminaire in a 45mm profile for comfortable light in different architectural contexts.



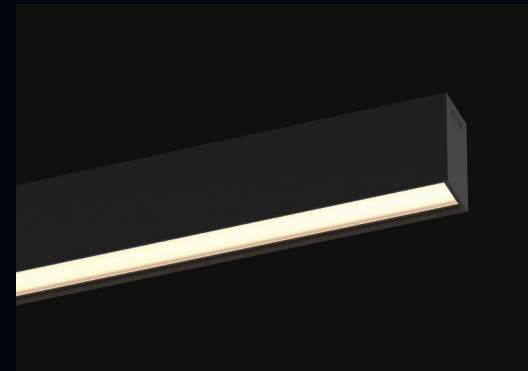
### U35

The U35 is a laser-thin luminaire that generates powerful light from a single line.



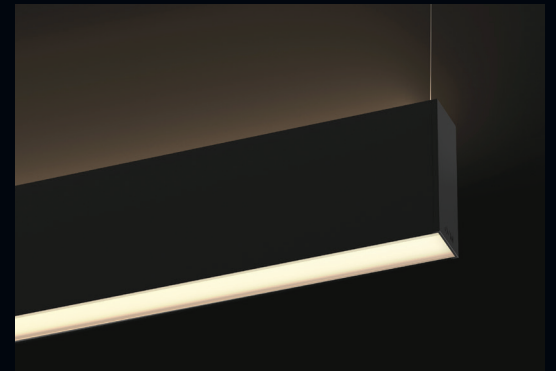
### U120

A larger luminaire, U120 brings powerful, modern design architectural lighting to any space.



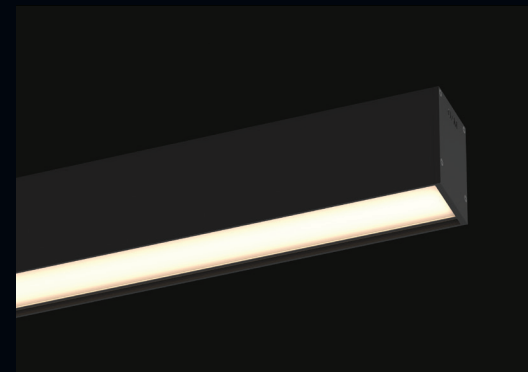
### U45

A version of the U line in an even more streamlined design, the U45 is a versatile, reliable luminaire with a signature elegance.



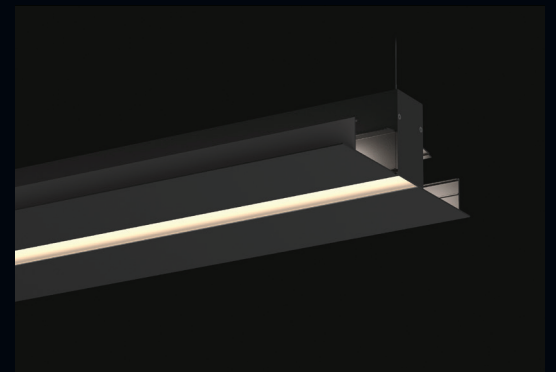
### H45

With both direct and indirect light, H45 is the go-to for excellent diffuse light distribution, within a sleek profile.



### U60

The classic U60's complete range features the most comprehensive variety of functions available, for complete lighting solutions.



### MGB

Ceiling-angled with or without light down, plus a track for spots: the multifaceted MGB ranges from ambient to detailed light.

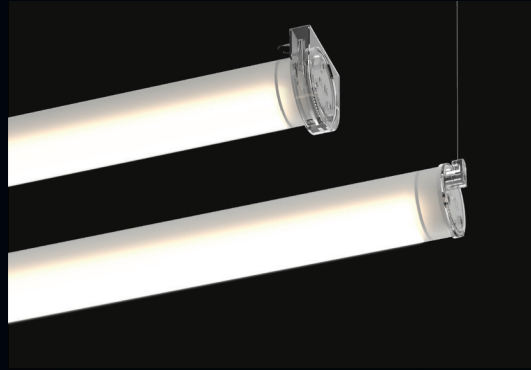
# Linear

Linear lighting segments



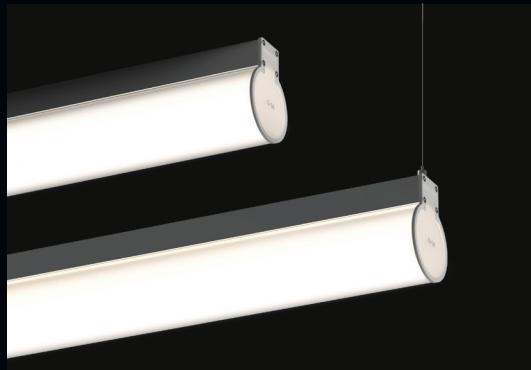
## Tubo Evo

Super spot, spot, flood and elliptical light beams, suitable for indoor and outdoor use. highly resistant and fully adjustable: the ultimate wall wash multitasker.



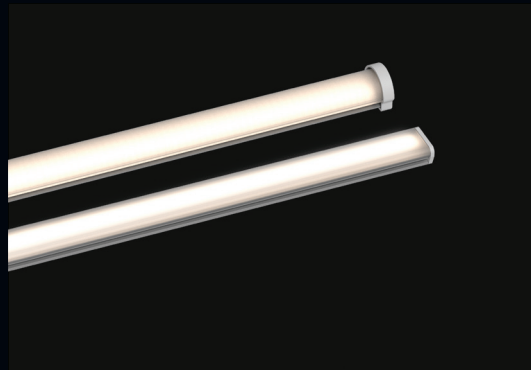
## Tubo

Form meets function in this classic all-purpose single light fixture. Tubo is a design piece that combines beauty, durability and versatility.



## O975

Shadowless, even, reliable and efficient: technology and design together in a cylinder of light.



## Limit

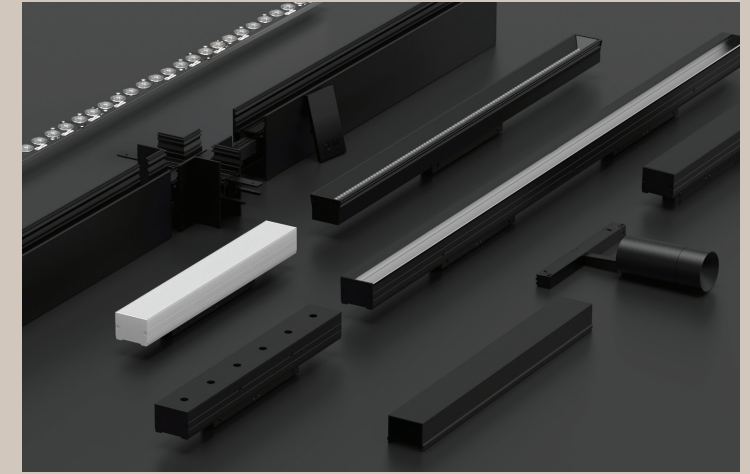
Cove lighting of great quality: state-of-the-art LEDs create fantastic light, from tiny spaces to large rooms.



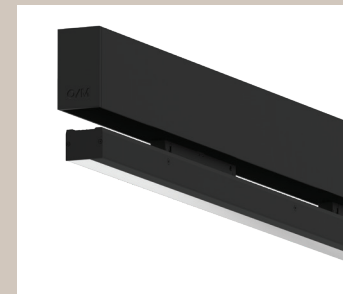
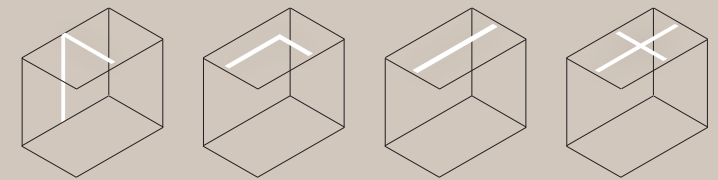
Product Tubo | Glass House | Pirque, Chile | Architecture: Max Nuñez | Photo: Roland Halbe

# Sys

Architectural Lighting System

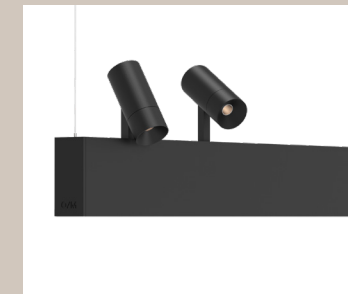


The elegant and modular track system that allows the various light modules to be quickly and easily installed and repositioned by simple clipping, with mechanical coupling.



## Easy click-in system

Sys features different light modules that can be easily adapted on site, and over time.



## Versatile application

Sys can be mounted recessed, surface, or pendant, allowing for direct and indirect effects.



## Modular structure

Linear light on the ceiling, or seamlessly cross from ceiling to the wall, or to have a T or X shape.

Customisable

Aluminium profile enclosing a continuous 48 Vdc track, Sys allows amazingly subtle and flexible lighting integration.

Top-notch optics

Sys offers accent and general lighting modules to contrast, focus, and balance light distribution.



1

inFinit module

The unique Lightstream optic creates an exceptional visual comfort ideal for workplaces.

LED CRI >90 3000K, 4000K  
>50.000h, L80/B10 | 2-step MacAdam  
IP20 | 48Vdc | 300 to 1200 mm  
Flood 65° UGR <13/16 | Wide Flood 80° UGR <19



2

Over module

High-definition Lightcore optic creates extremely precise beam angles while achieving maximum efficiency.

LED CRI >90 2700K, 3000K; CRI >80 4000K  
>50.000 h, L80/B10 | 2-step MacAdam  
IP20 | 48Vdc | Ø45 mm  
Medium 41°; Cut-off 88° | Flood 59°; Cut-off 58°



3

Indirect module

The batwing optic is a functional solution to spread indirect homogeneous light, widely distributed.

LED CRI >90 2700K, 3000K, 4000K  
>50.000 h, L80/B10 | 2-step MacAdam  
IP20 | 48Vdc | 600 and 1200 mm  
Batwing Indirect light 140° distribution

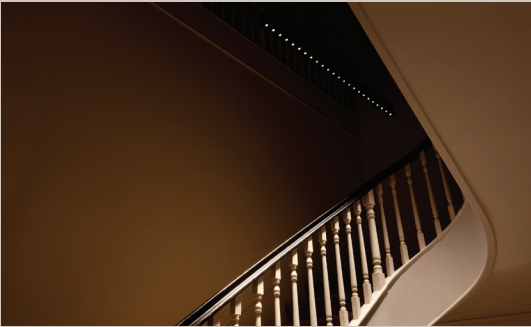


4

Uw module

The asymmetrical reflector drapes vertical surfaces with a uniform sheet of light.

LED CRI >90 2700K, 3000K; CRI >80 4000K  
>50.000h, L80/B10 | 2-step MacAdam  
IP20 | 48Vdc | 300 to 1200 mm  
Asymmetric distance to wall = 1/5 wall height



5

inVision module

The efficient double focus optics provide discreet general and accent lighting.

LED CRI >90 2700K, 3000K; CRI >80 4000K  
>50.000 h, L80/B10 | 2-step MacAdam  
IP20 | 48Vdc | 300 to 1200 mm  
Medium 30° UGR <10 | Flood 50° UGR <13/16



6

Diffuse module

Perfect uniformity with frosted polycarbonate diffuser for all applications where diffused light is required.

LED CRI >80 2700K, 3000K, 4000K  
>50.000h, L80/B10 | 3-step MacAdam  
IP20 | 48Vdc | 600 to 1200 mm  
Diffuse

# Diffuse

One-of-a-kind ambience



Product Tua | La Biennale di Venezia, Palazzo Franchetti | Venice, Italy | Photo: O/M



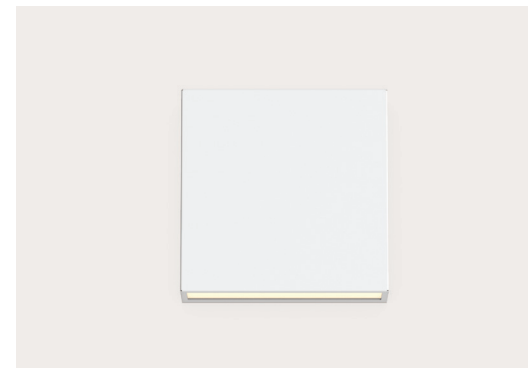
## Tua

Project light far and wide with Tua's advanced optical system. No glare, no lighting pollution.



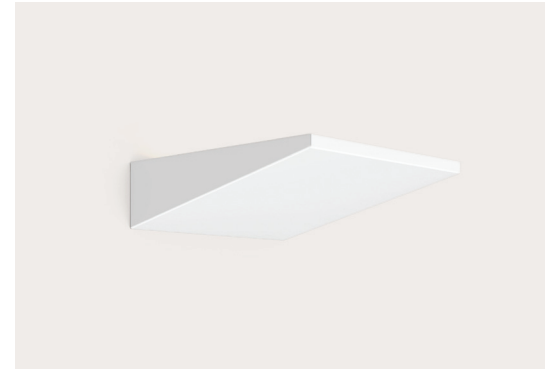
## Aleixo

Souto de Moura's groundbreaking luminaire continues to inspire future generations of design.



## Barcelos

Square, simple, and unmistakably modern, the subtle luminaire to create the perfect mood indoors and out.



## Esquadro

The thin blade that complements architecture in the slimmest possible way, yet creates a cozy environment inside or outside.



## Sky

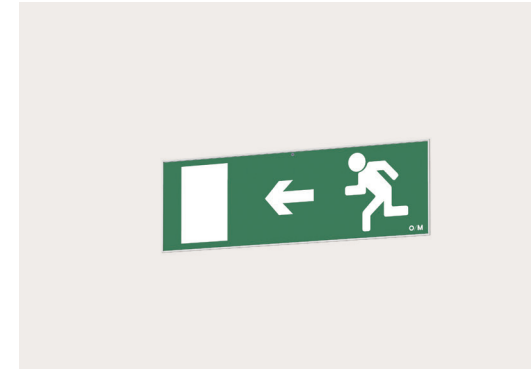
Perfectly lit, even, and round, Sky's complete range of luminaires makes circles of unbroken, uniform radiance.

# Safe

## Architectural safety signage



Product BS | Alcobaça Monastery Historic Hotel | Alcobaça, Portugal | Architecture: Souto de Moura | Photo: José Campos



### AS

With next-generation LED technology to create the most visibility possible, AS never competes with the surrounding architecture.



### BS

Born from Souto de Moura's famous Tubo 70, the BS emergency unit is an extension of the Tubo line and features the same durability and quality.



### LS

A modern profile relying on aluminium, LS is also the most complete and versatile emergency unit, with a timeless design.



### OS

Developed as an extension of O975 range, OS is built from the same specially-made shadowless polycarbonate and combines with the O975.



Rosewood Hotel | São Paulo, Brazil | Architecture: Jean Nouvel  
Interiors: Philippe Starck | Lighting: LD Studio / omstudio | Photo: Andrés Otero



DOP Restaurant | Porto, Portugal | Architecture: Atelier Sergio Rebelo  
Photo: José Campos



CBRE Offices | Lisbon, Portugal | Architecture: CBRE | Photo: João Grama



See the story behind:  
O/M Case Study

Portico de la Glória, Santiago de Compostela Cathedral | Santiago de Compostela, Spain | Lighting: Arkilum | Photo: Álvaro Valdecantos



Follow O/M and get updates delivered on your favorite channel.



O/M provides a robust system of tools to help designers through the process of understanding and selecting our products.

Whereas our catalogue is a detailed reference for every product and a wonderful book to browse, our website is constantly updated with the latest product information. It is the go-to source for technical drawings, photometric data, datasheets, and more.

We support your lighting project with an international network of highly skilled partners and consultants.

#### Consult with us

Count on clear communication and close collaboration. Our team is involved throughout the cycle of design, development and sale.

#### Tweak and tailor

Whether adapting products or creating bespoke solutions, our manufacturing unit offers scalable customisation.

#### Quality guarantee

O/M's luminaires are equipped with O/M LED Modules, meeting demands for maximum quality and durability. All products offer five years warranty.

#### After-sales service

Lighting projects are complex, and this is why our after-sales is a personalized service designed to provide efficient ongoing support.

#### Portugal

Porto Head Office / Factory  
R. Maurício Lourenço Oliveira 186,  
4405-034 Madalena, Porto  
+351 223 710 419

Lisbon Office  
Edifício Mar do Oriente  
Rua do Pólo Norte 16, 0.1  
1990-266 Lisboa  
+351 223 710 419

#### Brazil

São Paulo Head Office  
Av. 9 de Julho 4939, 126 A  
CEP 01407-200 Jardim Paulista  
São Paulo – SP  
+55 11 3045 3095

São Paulo Factory  
Rodovia Vice Prefeito Hermenegildo  
Tonoli 1500, Módulo 12  
CEP 13213-086 Distrito Industrial  
Jundiaí – SP

#### Spain

Barcelona Office  
+34 648 150 109  
spain@om-light.com

mail@om-light.com

www.om-light.com

Affiliations we are proud of:



AsBAi

INTERNATIONAL ASSOCIATION  
OF LIGHTING DESIGNERS

IALD



Take a look at Sys,  
the Architectural Lighting System