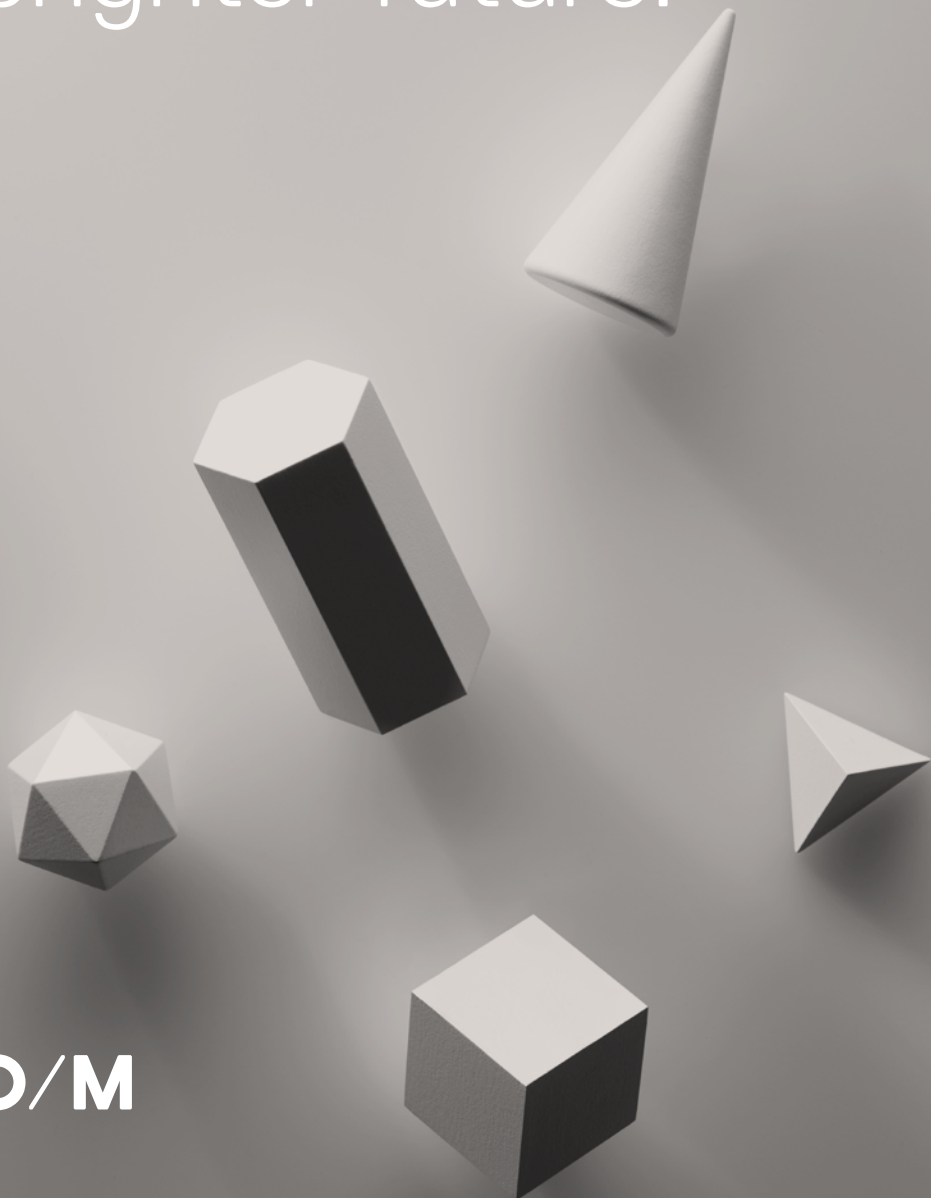


# Standing for a brighter future.



**O/M**

Established as a brand in 2012 in Porto, Portugal, the origins of O/M can be found in more than 60 years of experience in manufacturing lighting fixtures. It has been a long journey, marked by two fundamental approaches: close collaboration with architects, engineers and designers to manufacture customized solutions for each project, and a constant desire to excel.

Since the very beginning, O/M has intended to lead the way in enhancing the efficiency and performance of lighting and hence reducing the lighting's climate impact even further. Quality and durability are on display in the state-of-the-art O/M products. This extends to all components of O/M luminaires and operations.

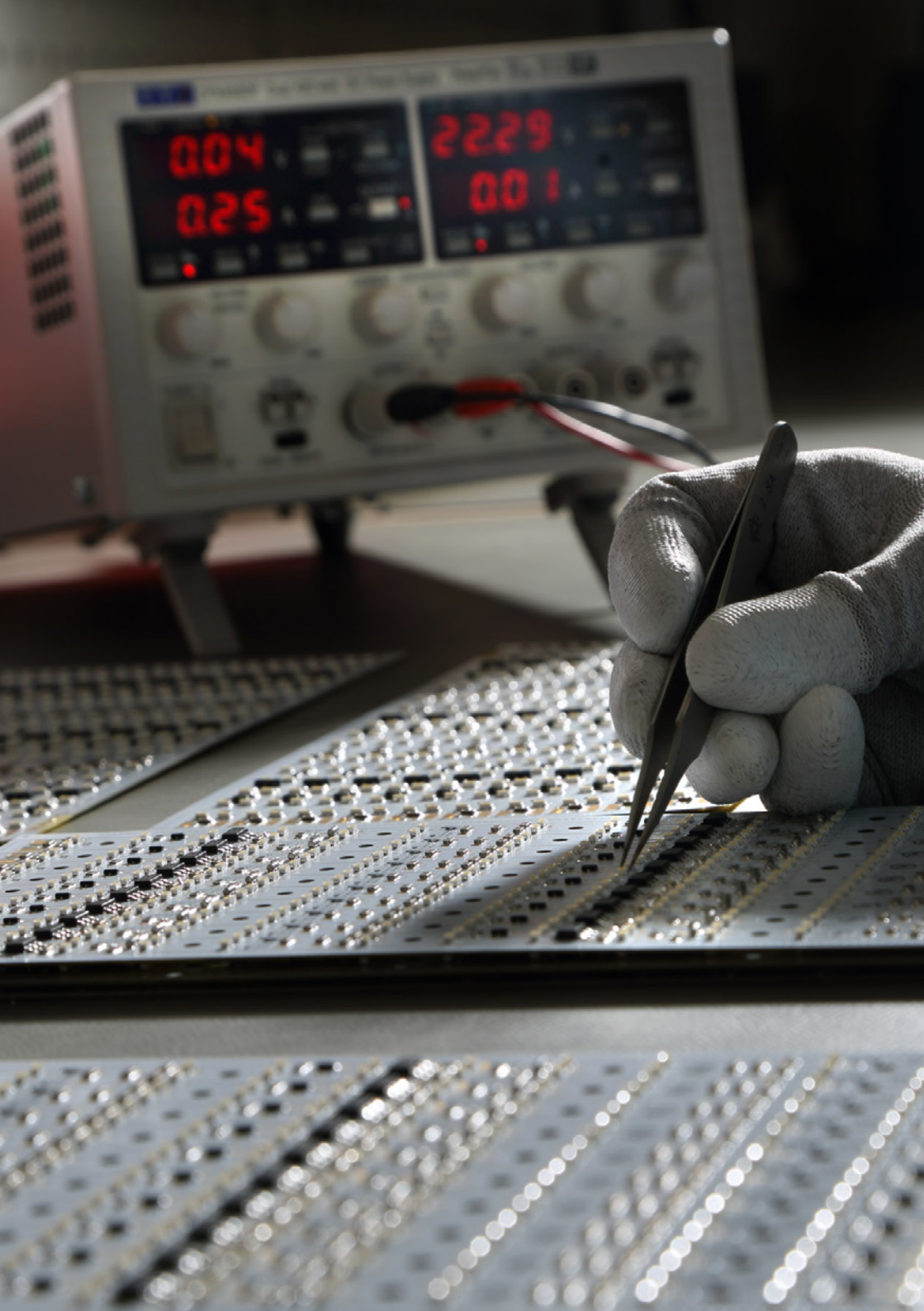


<b>Material sustainability</b>	7
<b>Waste management</b>	13
<b>Maintenance and repair</b>	15
<b>Business Ethics</b>	16









## Material sustainability

### LED modules

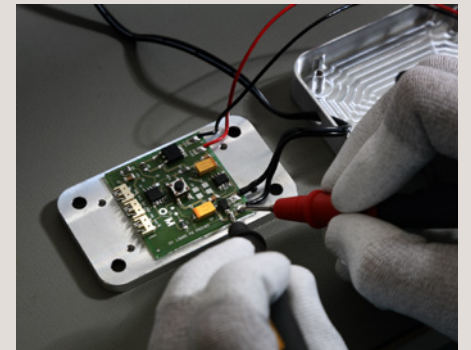
Development of a range of O/M LED with excellent colour consistency (2 step-MacAdam) and long operating lifespan (>50.000h; L80/B10).

The LED technology driving O/M's products obviously complies with IES LM-80.



### PCBA

Use of groundbreaking technology and expertise in thermal management has driven PCBA manufacturing, a decisive step needed to guarantee the durability and reliability of light sources and their electronics, always bearing in mind the sustainability standards and efficiency, security and well-being demands.



### Drivers

By using top-quality drivers, O/M prevents the creation of unnecessary electrical and electronic waste by increasing the products lifespan.

If damaged, drivers can always be replaced by a professional or be discarded in compliance with the EU rules on handling electrical waste and electronic equipment (WEEE).





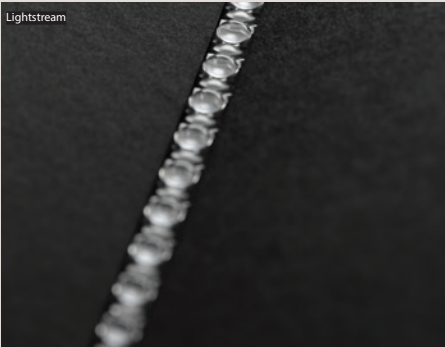
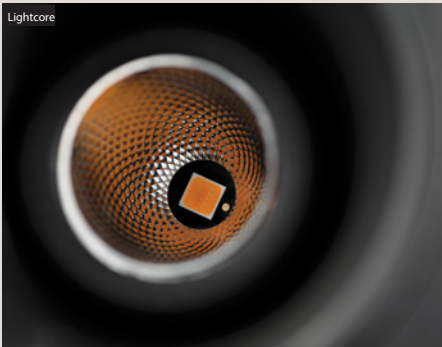
Optics

Both Lightcore optics, Lighstream and LFO lenses are partially made of recycled raw materials and can be recycled when dismantled.

Polycarbonate, PMMA and other plastics are sorted to produce granules that flow back into the life cycles of new optics and lenses.

Lightcore	One, One Plus, Over
Lightstream	inFinit
LFO	Nub, inVision, inVision35, inVision45

Recycled and recyclable optics and lenses.



Body

Since aluminium is a 100% recyclable material, all O/M products with aluminium bodies allows endless reuse.

O/M's aluminium profiles already use up to 40% of recycled material.

Polycarbonate, PMMA and other plastic profiles and components can be reduced to granules that flow back into the life cycles to produce new profiles.

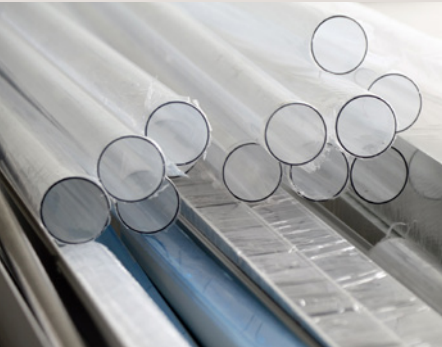
This way, we not only reduce the production of material scrap but also make a valuable contribution to the sustainable manufacturing of our products while ensuring their quality.

In compliance with ROHS, O/M products contain no lead (Pb), halogen or any other harmful element.

Aluminium profiles use up to 40% of recycled feedstock.

PC, PMMA and other plastic profiles and components are both recycled and recyclable.

No lead or halogen.



## Packaging

We constantly optimise our packaging by choosing options which perfectly match the product's specific requirements, the materials used, cost and effect on logistics and storage.

Nowadays, our paper and paperboard packaging uses from 89 to 99% recycled fibers and it complies with FSC®, PEFC™, ISO 9001 and ISO 14001 certification.

To ensure shipped merchandise is not lost or damaged we might use plastic film (LDPE) which contains up to 50% of recycled material, which can always be recycled.

Recycled and recyclable cardboard and paper scotch tape.







## Waste management

In addition to the design, construction, and assembly, the painting of our products is done in-house. This way we can guarantee the quality standards and ensure the appropriate waste management.

All flammable and toxic liquid waste such as paints and solvents are collected by a specialized and duly certified entity, to be channeled for appropriate waste treatment.

By painting our products ourselves, we are able to reduce the product carbon footprint since we avoid the transport of products and merchandise between suppliers.

Over the past years, with the increase of digitisation O/M has been reducing the use of paper throughout its activity. In the near future we intend to eliminating this resource altogether. All waste produced as a result of day-to-day activity is separated and, whenever possible, sent for recycling.





## Maintenance and repair

The lighting fixtures lifespan depends on correct installation and maintenance. O/M products must be installed and maintained by qualified professionals.

The installation conditions described in the instructions and the operating conditions mentioned in the products datasheets must be duly guaranteed. The performance of the product can only be guaranteed if its handling, installation, use and maintenance are performed according to the supplied instructions.

O/M guarantee that products are free of material and manufacturing defects for a period of 5 years from their invoice date, provided they are used for the purpose for which they were designed, within ambient limits and with appropriate use and when installed in accordance with established procedures.

To meet the current environmental and durability requirements, O/M provide a 10-year availability guarantee for the products and its components, either identical or updated according to technological developments and innovations.

The spare parts will be identified with an own code and can be acquired during the announced period.

After R&D analysis, any modifications will be compatible with the performance and installation conditions of the primary equipment.

Replacements can be done either returning the light modules to O/M factory or assuring the procedure locally, by a specialized technician.



# Business ethics

In addition, to complying with all applicable legal requirements, O/M seeks to continuous improvement in all its environmental aspects. Our code of conduct and related policies are applied throughout our operations and those of our subcontractors.

Thus, we seek to make this improvement happen across a responsible supply chain by favouring highly rated suppliers with a small ecological footprint and sustainable standards.

That is why O/M maintains close and long-term relationships mostly with national and European suppliers.

O/M builds the foundation of a sustainable performance by establishing standards that ensure safe working conditions, equal and respectful treatment of employees, and environmentally responsible and ethically conducted business operations.

- Environmental compliance.
- Ethical business practices.
- Employee wellbeing and safety.
- Responsible supply chain.

Austria	Lenses and optics
Finland	LED
Germany	Lenses, reflectors, polycarbonate profiles and diffusers
Italy	Profiles and tracks
Portugal	Paper and packaging, aluminium profiles, cables and other small components

O/M currently holds ISO9001:2008 certificate.

Explore our website and find out more

A screenshot of the O/M website. At the top, there is a navigation bar with the 'O/M' logo on the left and links for 'Products', 'Projects', 'Downloads', and 'News & Events' on the right. Below the navigation bar, the main content area is divided into two columns. The left column features the heading 'All products' in a large, bold, black serif font. Below this heading are four sub-headings: 'Interior', 'Exterior', 'Emergency', and 'Filters', each in a smaller, bold, black serif font. Under 'Filters', there is a link that says 'View products by application'. The right column contains four product categories, each with a bold heading and a descriptive line below it: 'Spot On' (with 'Ready, remove and diffuse'), 'Linear' (with 'Low flame resistance'), 'Systems' (with 'Customized and modular systems'), 'Diffuse' (with 'One of a kind ambience'), and 'Safe' (with 'Architectural safety signage').

Systems  
Customisable  
and modular  
systems

[illegible]

Design Process

Top Side View

Side View

Side View

Top View

Material Choice

**Case Control Package Release**

Designed by the author, Carl B. Bickel, and manufactured by J&B. This is one of the largest case controls in the world and is made of aluminum and steel and built in Canada.

Author: Carl B. Bickel  
Location:

Figure 10.10 consists of three parts: (a) Plan view, (b) Elevation view, and (c) Sectional view. Part (a) shows a circular sewer with a diameter of 1.0 m and a depth of 1.0 m. The slope is 1:1. Part (b) shows the sewer profile with a 1:1 slope and a 0.5 m depth. Part (c) shows the sewer profile with a 1:1 slope and a 0.5 m depth.

O/M



[www.om-light.com](http://www.om-light.com)

## Trust a relationship built on collaboration.

### Get in touch with us.

You can count on clear communication and close collaboration. Our team is engaged throughout the cycle of design, development and sale. Focus on your vision while our multidisciplinary team of specialists supports you with product engineering, electronics, control systems, and first-hand access to the newest optics research.

### For general inquiries:

[mail@om-light.com](mailto:mail@om-light.com)

### For technical support, quote requests, deliveries and logistics:

[support@om-light.com](mailto:support@om-light.com)

[www.om-light.com/en/contacts](http://www.om-light.com/en/contacts)

## Target anywhere in the world.

### Find a local sales partner.

A network of international sales partners enables you to serve your client wherever they may be. O/M guarantees service in several countries and its portfolio includes finished projects on five continents.



[mail@om-light.com](mailto:mail@om-light.com)

## Connect with us directly.

### Portugal

#### Porto Head Office / Factory

R. Maurício Lourenço Oliveira 186,  
4405-034 Vila Nova de Gaia  
+351 223 710 419

#### Lisbon Office

Edifício Mar do Oriente  
Rua do Pólo Norte 16, 0.1  
1990-266 Lisboa  
+351 211 919 300

### Brazil

#### São Paulo Head Office

Av. 9 de Julho 4939, 126 A  
CEP 01407-200 Jardim Paulista  
São Paulo – SP  
+55 11 3045 3095

#### São Paulo Factory

Rodovia Vice Prefeito Hermenegildo  
Tonoli 1500, Módulo 12  
CEP 13213-086 Distrito Industrial.  
Jundiaí – SP

#### Rio de Janeiro Office

+55 21 972 866 844  
[brasil@om-light.com](mailto:brasil@om-light.com)

### Spain

#### Barcelona Office

+34 648 150 109  
[spain@om-light.com](mailto:spain@om-light.com)

