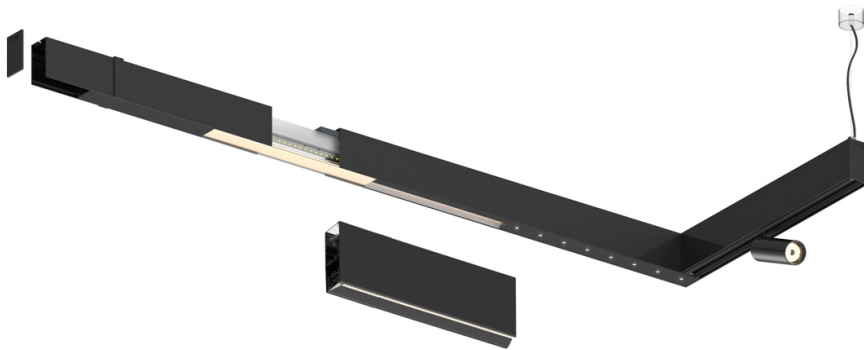


53W / 5500lm / 3000K / DALI / Wide flood
80° / 2880mm

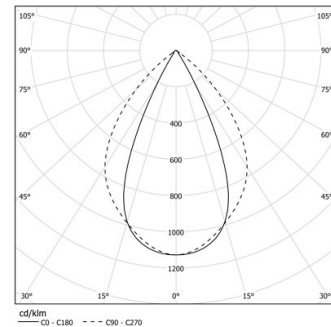
63171

Design: O/M + Bartenbach GmbH

LED CRI>90 / >50.000h, L80/B10 / 2-step MacAdam
Power supply included.
IP20 | 230Vac | 50/60Hz



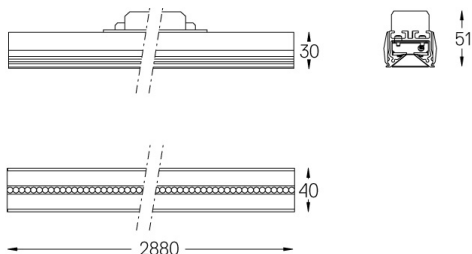
LED	3000K	Lichtquelle	Leuchte
Leistung		53W	62W
Strom		6900lm	5500lm
Effizienz		130lm/W	89lm/W
LOR		-	0.8
UGR		-	<19



Abstrahlwinkel
Wide flood 80°

Anwendung

Gewicht



Ausführungen

- .01 Weiß / RAL 9010
- .02 Schwarz / RAL 9005