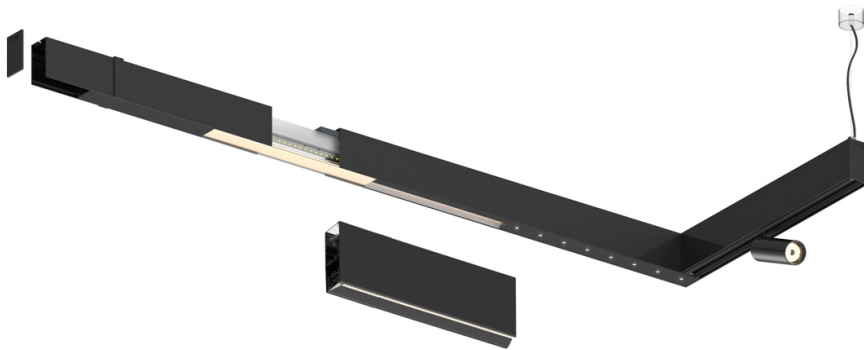


32W / 2050lm / 4000K / DALI / Asymmetric /
1200mm

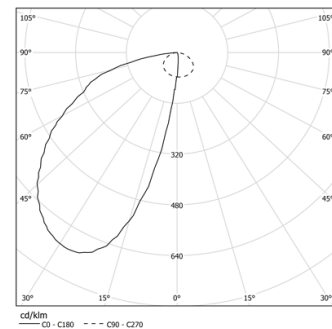
61254

Design: O/M + Bartenbach GmbH

LED CRI>80 / >50.000h, L80/B10
2-step MacAdam / power supply included.
IP20 | 230Vac | 50/60Hz



LED	4000K	Lichtquelle	Leuchte
Leistung	32W	38W	
Strom	4480lm	2050lm	
Effizienz	140lm/W	54lm/W	
LOR	-	46%	
UGR	-	-	



Abstrahlwinkel
Asymmetric

Anwendung

Gewicht



Ausführungen

- .01 Weiß / RAL 9010
- .02 Schwarz / RAL 9005
- .03 Grau / RAL 9006

