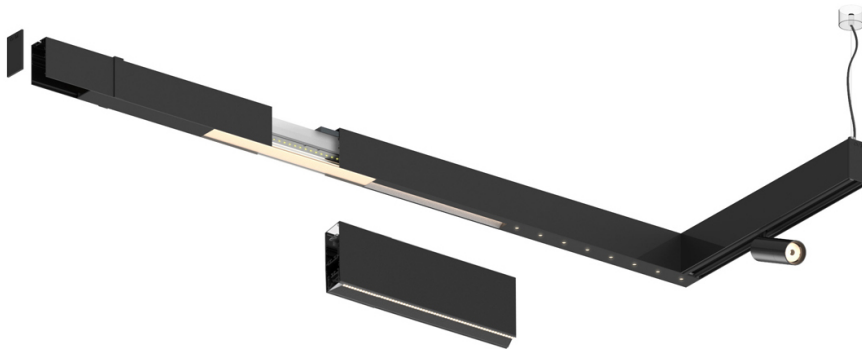


20W / 2160lm / 4000K / DALI / Flood 65° /
1728mm

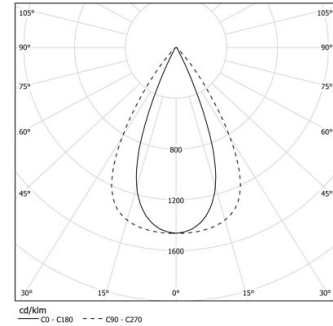
61231

Design: O/M + Bartenbach GmbH

LED CRI>90 / >50.000h, L80/B10 / 2-step MacAdam
Power supply included.
IP20 | 230Vac | 50/60Hz



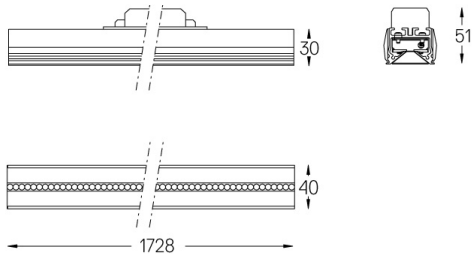
LED	4000K	Lichtquelle	Leuchte
Leistung	20W	2700lm	24W
Strom	2700lm	136lm/W	2160lm
Effizienz	136lm/W	-	92lm/W
LOR	-	-	0.8
UGR	-	-	<13



Abstrahlwinkel
Flood 65°

Anwendung

Gewicht



Ausführungen

- .01 Weiß / RAL 9010
- .02 Schwarz / RAL 9005