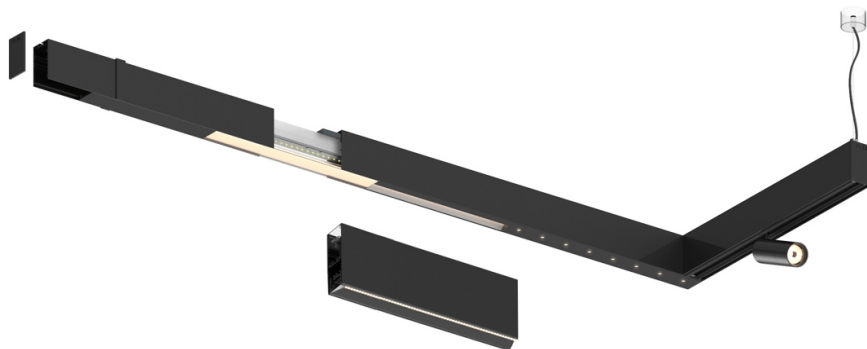


22W / 2200lm / 3000K / DALI / Wide flood  
80° / 1171mm

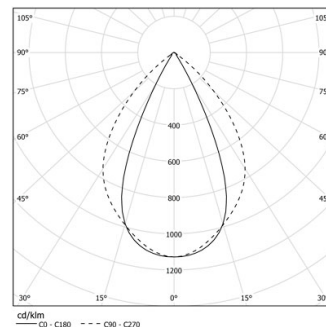
61158

Design: O/M + Bartenbach GmbH

LED CRI>90 / >50.000h, L80/B10 / 2-step MacAdam  
Power supply included.  
IP20 | 230Vac | 50/60Hz



LED	3000K	Lichtquelle	Leuchte
Leistung		22W	25W
Strom		2760lm	2200lm
Effizienz		130lm/W	89lm/W
LOR		-	0.8
UGR		-	<19



Abstrahlwinkel  
Wide flood 80°

Anwendung

Gewicht



Ausführungen

- .01 Weiß / RAL 9010
- .02 Schwarz / RAL 9005

