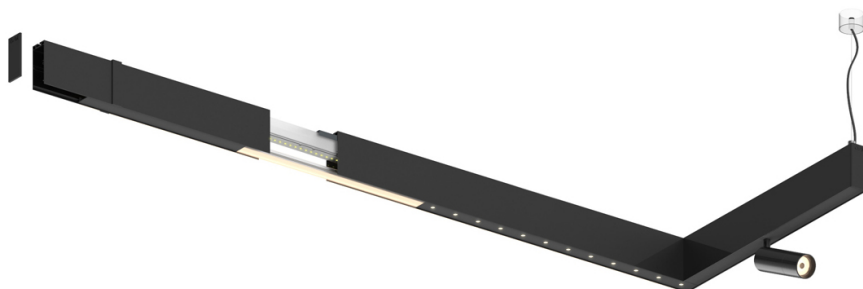
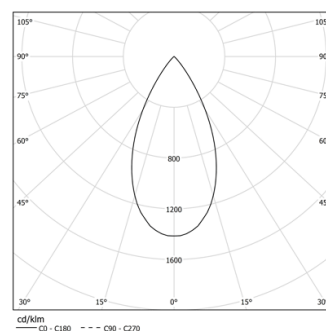


Design: O/M + Bartenbach GmbH

LED CRI>90 / >50.000h, L80/B10  
2-step MacAdam / power supply included.  
IP20 | 230Vac | 50/60Hz



LED	2700K	Lichtquelle	Leuchte
Leistung	21W		24W
Strom	1800lm		1380lm
Effizienz	86lm/W		58lm/W
LOR	-		0.766666666666667
UGR	-		<10



Abstrahlwinkel  
Flood 50°

Anwendung

Gewicht  
0,6Kg



### Ausführungen

- .01 Weiß / RAL 9010
- .02 Schwarz / RAL 9005

