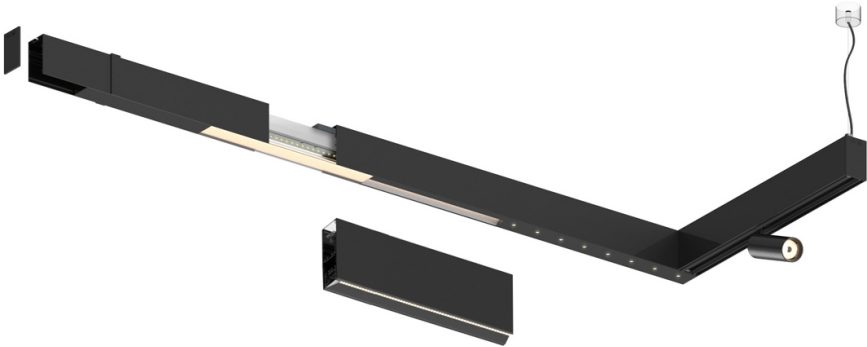
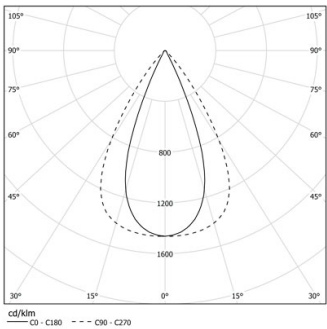


Design: O/M + Bartenbach GmbH

LED CRI>90 / >50.000h, L80/B10 / 2-step MacAdam
Power supply included.
IP20 | 230Vac | 50/60Hz



| LED | 3000K | Lichtquelle | Leuchte |
|-----------|---------|-------------|--------------------|
| Leistung | 27W | | 32W |
| Strom | 3360lm | | 2720lm |
| Effizienz | 127lm/W | | 87lm/W |
| LOR | - | | 0.8100000000000001 |
| UGR | - | | <13 |



Abstrahlwinkel
Flood 65°

Anwendung

Gewicht



- Ausführungen
- .01 Weiß / RAL 9010
 - .02 Schwarz / RAL 9005

