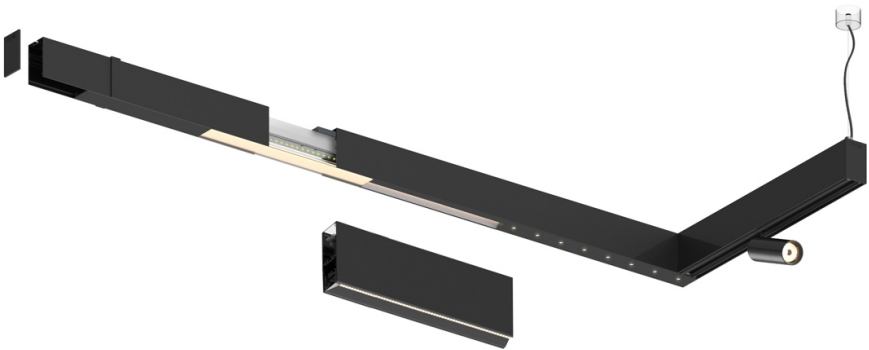

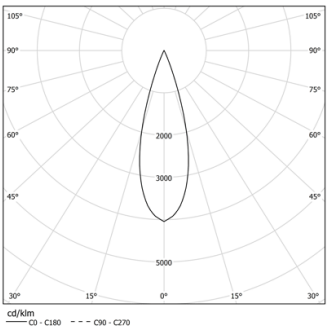


Design: O/M + Bartenbach GmbH

LED CRI>90 / >50.000h, L80/B10 / 2-step MacAdam
Power supply included.
IP20 | 230Vac | 50/60Hz



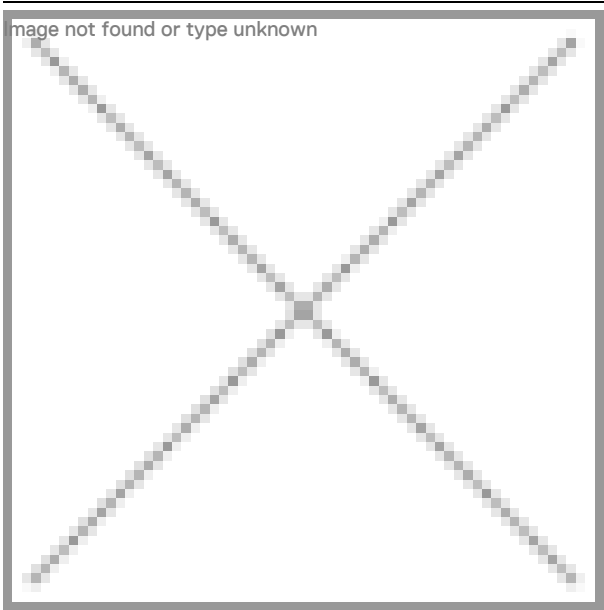
 2700K	Lichtquelle	Leuchte
Leistung	27W	32W
Strom	2400lm	1760lm
Effizienz	89lm/W	55lm/W
LOR	-	73%
UGR	-	<10



Abstrahlwinkel
Medium 30°

Anwendung

Gewicht



Ausführungen

- ☐ .01 Weiß / RAL 9010
- ☒ .02 Schwarz / RAL 9005