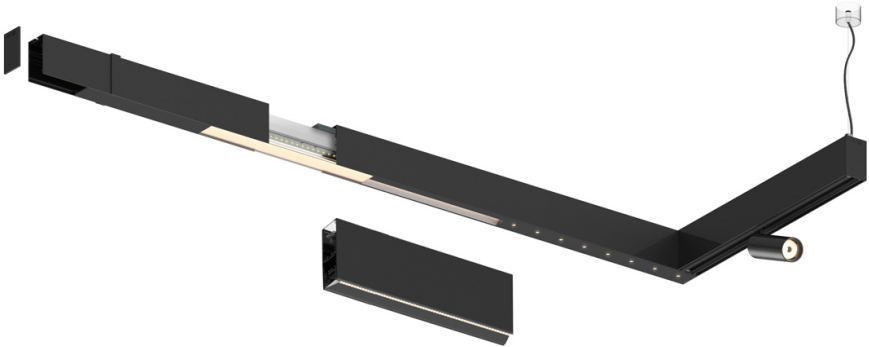
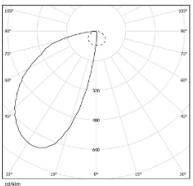


Design: O/M + Bartenbach GmbH

LED CRI>80 / >50.000h, L80/B10
2-step MacAdam / power supply included.
DALI DT8
IP20 | 230Vac | 50/60Hz



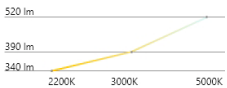
LED	2200K-5000K	Lichtquelle	Leuchte
Leistung		16W*	19W*
Strom		1550lm*	710lm*
Effizienz		97lm/W	37lm/W
LOR		-	46%
UGR		-	-



Abstrahlwinkel
Asymmetric

Anwendung

Gewicht



Ausführungen

- .01 Weiß / RAL 9010
- .02 Schwarz / RAL 9005
- .03 Grau / RAL 9006

