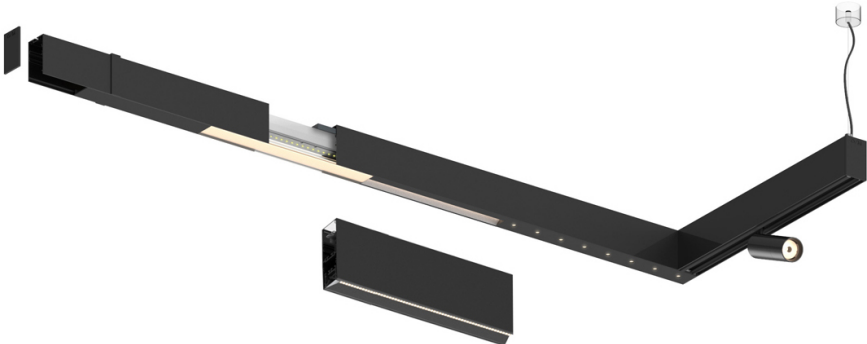

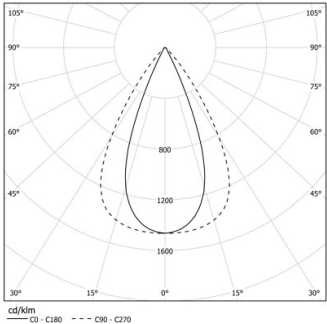


Design: O/M + Bartenbach GmbH

LED CRI>90 / >50.000h, L80/B10 / 2-step MacAdam
Power supply included.
IP20 | 230Vac | 50/60Hz



 4000K	Lichtquelle	Leuchte
Leistung	28W	33W
Strom	3900lm	3120lm
Effizienz	141lm/W	96lm/W
LOR	-	0.8
UGR	-	<16



Abstrahlwinkel
Flood 65°

Anwendung

Gewicht



Ausführungen

- .01 Weiß / RAL 9010
- .02 Schwarz / RAL 9005

