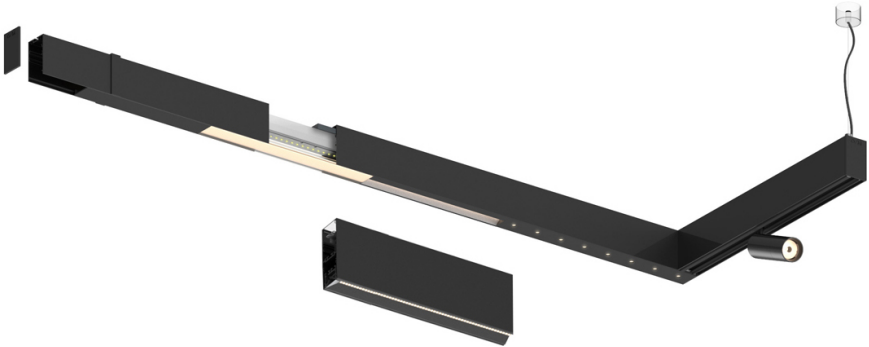

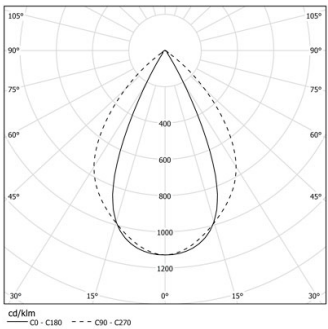


Design: O/M + Bartenbach GmbH

LED CRI>90 / >50.000h, L80/B10 / 2-step MacAdam  
Power supply included.  
IP20 | 230Vac | 50/60Hz



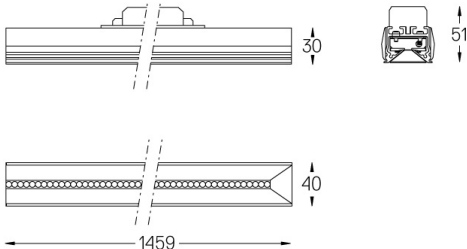
 LED	3000K	Lichtquelle	Leuchte
Leistung		17W	20W
Strom		2100lm	1700lm
Effizienz		127lm/W	87lm/W
LOR		-	0.8100000000000001
UGR		-	<19



Abstrahlwinkel  
Wide flood 80°

Anwendung

Gewicht



### Ausführungen

- .01 Weiß / RAL 9010
- .02 Schwarz / RAL 9005