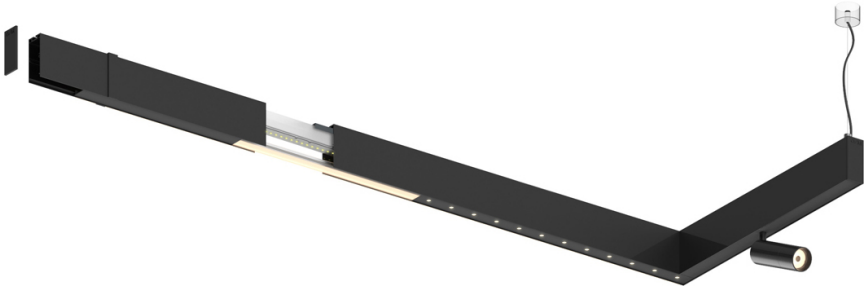

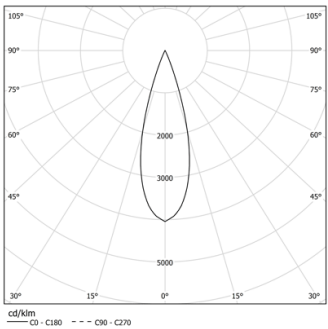


Design: O/M + Bartenbach GmbH

LED >80CRI<90 / >50.000h, L80/B10 / 3-step MacAdam  
Power supply included.  
DALI DT8.  
IP20 | 230Vac | 50/60Hz



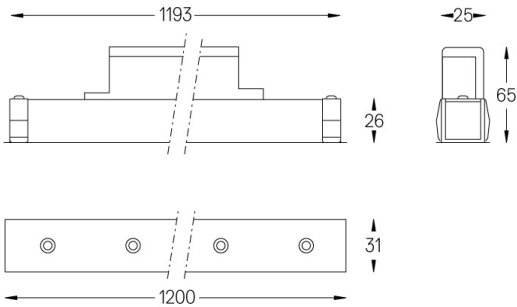
 2200K-5000K	Lichtquelle	Leuchte
Leistung	46W	58W
Strom	3760lm	2720lm
Effizienz	82lm/W	47lm/W
LOR	-	0.72
UGR	-	<10



Abstrahlwinkel  
Medium 30°

Anwendung

Gewicht



Ausführungen

- .01 Weiß / RAL 9010
- .02 Schwarz / RAL 9005