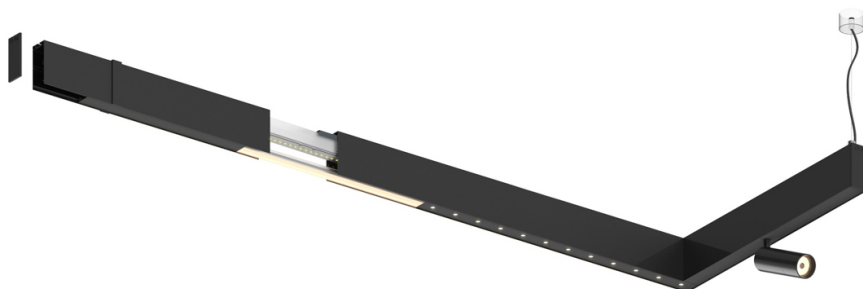


Design: O/M + Bartenbach GmbH

LED CRI>90 / >50.000h, L80/B10  
2-step MacAdam / power supply included.  
IP20 | 230Vac | 50/60Hz



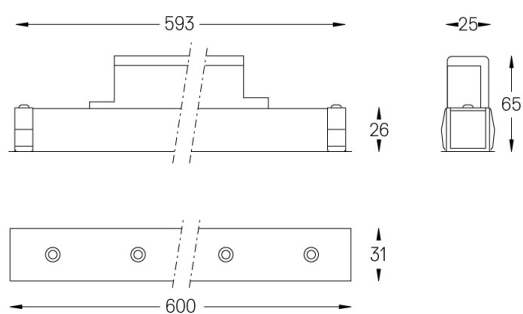
LED	3000K	Lichtquelle	Leuchte
Leistung	26W		32W
Strom	2580lm		1960lm
Effizienz	99lm/W		61lm/W
LOR	-		0.7596899224806202
UGR	-		<16



Abstrahlwinkel  
Flood 50°

Anwendung

Gewicht  
0,5Kg



### Ausführungen

- .01 Weiß / RAL 9010
- .02 Schwarz / RAL 9005