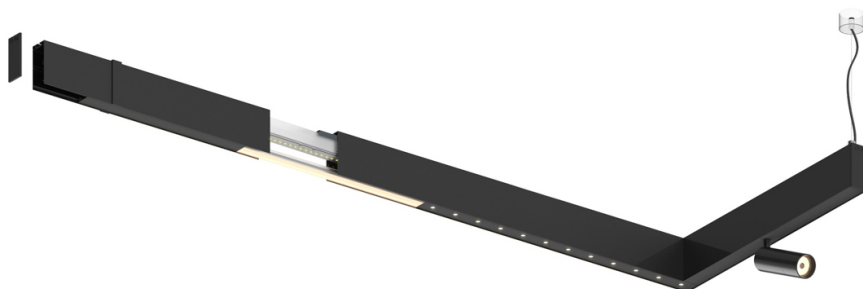
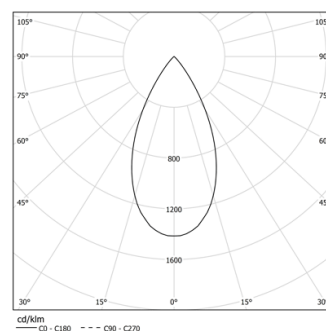


Design: O/M + Bartenbach GmbH

LED CRI>90 / >50.000h, L80/B10
2-step MacAdam / power supply included.
IP20 | 230Vac | 50/60Hz



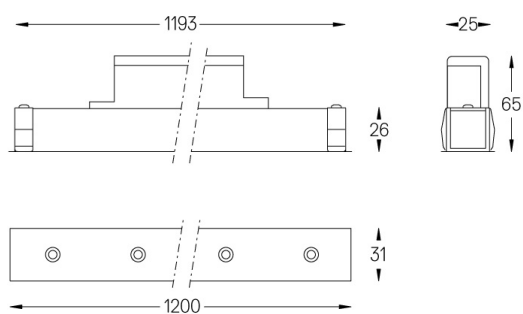
LED	2700K	Lichtquelle	Leuchte
Leistung	52W		64W
Strom	4800lm		3640lm
Effizienz	92lm/W		57lm/W
LOR	-		0.7583333333333333
UGR	-		<16



Abstrahlwinkel
Flood 50°

Anwendung

Gewicht
0,8Kg



Ausführungen

- .01 Weiß / RAL 9010
- .02 Schwarz / RAL 9005