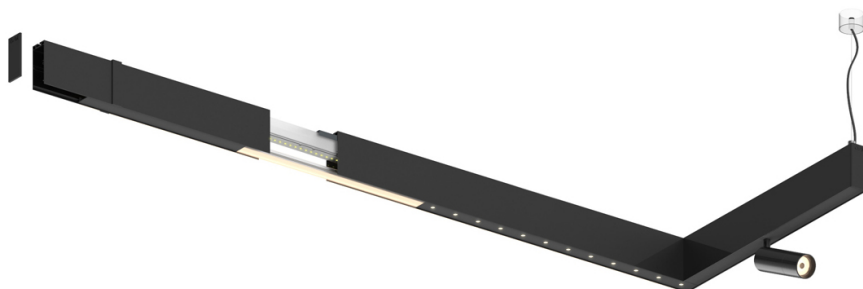
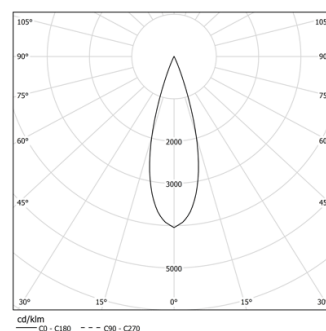


Design: O/M + Bartenbach GmbH

LED CRI>90 / >50.000h, L80/B10
2-step MacAdam / power supply included.
IP20 | 230Vac | 50/60Hz



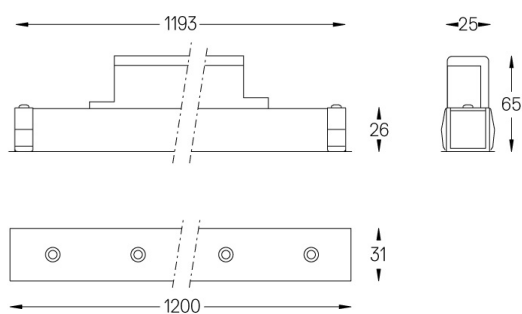
LED	2700K	Lichtquelle	Leuchte
Leistung	27W		32W
Strom	2400lm		1760lm
Effizienz	89lm/W		55lm/W
LOR	-		0.7333333333333333
UGR	-		<10



Abstrahlwinkel
Medium 30°

Anwendung

Gewicht
0,8Kg



Ausführungen

- .01 Weiß / RAL 9010
- .02 Schwarz / RAL 9005