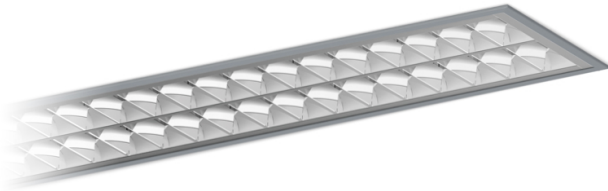



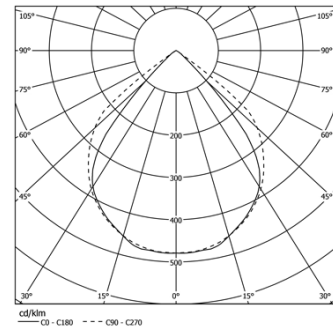
 Code no longer in production

Design: Eduardo Souto de Moura
 Recessed luminaire with housing made of anodised aluminium profile with matt or textured-paint finish. Parabolic aluminium reflector with 98% reflection, low luminance and glare control (UGR<19), with user friendly clipping system.
 Aluminium end caps.
 Supplied with fitting accessories.

T5 multiwatt ballast and aluminium internal reflector with 98% reflection included.
 IP20 | 230Vac | 50/60Hz



 T5	Light Source	Luminaire
Power	2x28/54W	2x32/58W
Flux	-	-
Efficiency	-	-
LOR	-	80%
UGR	-	<19



Beam angle

-

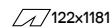
Application







Weight

5Kg

 mm

 122x1181

Finishes

-  .01 White / RAL 9010
-  .02 Black / RAL 9005
-  .10 Anodised aluminium
-  .00 RAL on request

