

2x35/49W / DALI / 2860mm

32122

! Code no longer in production

Design: Eduardo Souto de Moura

Ceiling-mounted luminaire with housing made of anodised aluminium profile with matt or textured-paint finish.

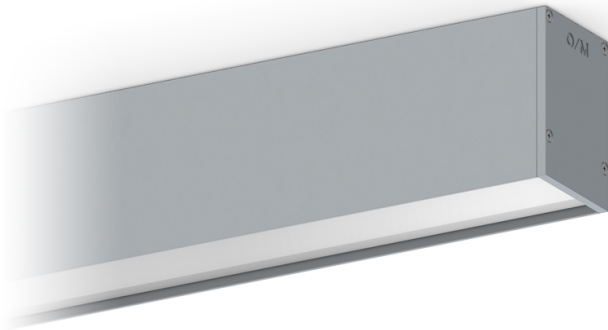
Frosted polycarbonate diffuser with user friendly clipping system and double fitting system: flushed or recessed.


5mm aluminium end caps.

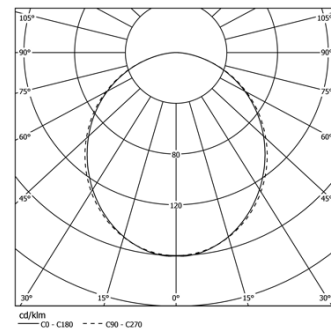
Supplied with fitting accessories.

T5 multiwatt ballast and aluminium internal reflector with 98% reflection included.

IP40 | 230Vac | 50/60Hz



 T5	Light Source	Luminaire
Power	2x35/49W	2x38/53W
Flux	-	-
Efficiency	-	-
LOR	-	43%
UGR	-	<25



Beam angle

-

Application







Weight

8,2Kg

 mm

Finishes

-  .01 White / RAL 9010
-  .02 Black / RAL 9005
-  .10 Anodised aluminium
-  .00 RAL on request

