

H60 Pendant

2x29W / 2x4200lm / 3000K / On/Off
Separate Circuits / 1155mm

25275

Pending Updates

Design: O/M

Direct and indirect light pendant luminaire with housing made of anodised aluminium profile with matt or textured paint finish.

Polycarbonate diffusers with user friendly clipping system.

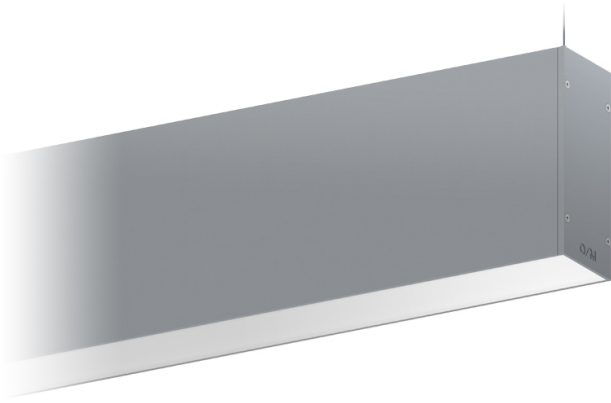
5mm aluminium end caps.

Available with single or separate circuits.

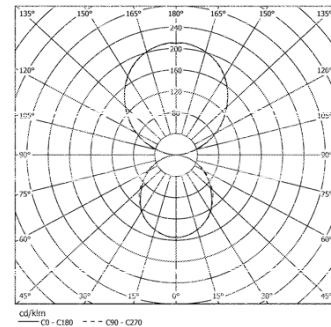
LED CRI>80 / >50.000h, L80/B10 / 3-step MacAdam

Power supply included.

IP20 | 230Vac | 50/60Hz



LED	High Output 3000K	Light Source	Luminaire
Power		2x29W	2x35W
Flux		2x4200lm	2x2325lm
Efficiency		145lm/W	60lm/W
LOR		-	50%
UGR		-	-



Beam angle

-

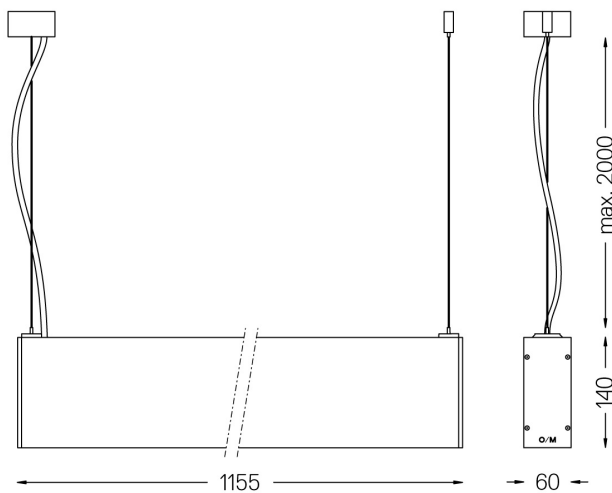
Application



Weight

5,6Kg

mm



Finishes

- .01 White / RAL 9010
- .02 Black / RAL 9005
- .10 Anodised aluminium
- .00 RAL on request

Included

Aluminium power supply base
Ø60x37mm

